

# ANGBEJAR DRAPERY HARDWARE

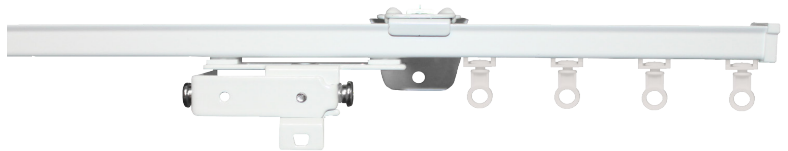
## 2024 RETAIL PRICE LIST

Distributed By Emdee Home T 770.457.5450 E info@goemdee.com

### TRACK SYSTEMS

#### B3 SERIES

page 4



B3TR	White Track 13'1",16'4",19'8"	\$	4.67	ft
B3SL	Silver 16'4"	\$	5.12	ft
B3BR	Brown 16'4"	\$	5.12	ft
B3BK	Black 16'4"	\$	5.12	ft

#### Assembled

First 48"	\$	124.45
Each Additional foot	\$	13.57

*Add 10% for color other than white.*

Assembled Pricing Includes: white track cut to size, masters, carriers, end caps, brackets, and 36" fiberglass batons with snap. Freight not included.	<b>First 48"</b>	\$	124.45	<b>144"</b>	\$	233.02
	<b>60"</b>	\$	138.02	<b>156"</b>	\$	246.59
	<b>72"</b>	\$	151.59	<b>168"</b>	\$	260.16
	<b>84"</b>	\$	165.17	<b>180"</b>	\$	273.74
	<b>96"</b>	\$	178.74	<b>192"</b>	\$	287.31
	<b>108"</b>	\$	192.31	<b>204"</b>	\$	300.88
	<b>120"</b>	\$	205.88	<b>216"</b>	\$	314.45
	<b>132"</b>	\$	219.45	<b>228"</b>	\$	328.02

#### Components

KCAR01-WH	Klick Carrier	\$	0.53	ea
SCAR04-WH	Snap Carrier	\$	0.55	ea
PCAR03-WH	Pinch Pleat Carrier	\$	0.30	ea
BCAR04-WH	Small Ball Bearing	\$	1.37	ea
RCARS60-WH	2 piece connected snap 60%	\$	1.18	ea
RCARS80-WH	2 piece connected snap 80%	\$	1.18	ea
RCARS100-WH	2 piece connected snap 100%	\$	1.18	ea
RCARS120-WH	2 piece connected snap 120%	\$	1.18	ea
KCAR02-WH	Stop Carrier	\$	1.02	ea
HCAR06-WH	Carreir w/SS Hook	\$	1.44	ea
PMAS525-WH	Pinch Pleat Master Over R	\$	12.65	ea
PMAS526-WH	Pinch Pleat Master Under L	\$	12.65	ea
PMAS527-WH	Pinch Pleat Master Over L	\$	12.65	ea
PMAS528-WH	Pinch Pleat Master Under R	\$	12.65	ea
BMAS209-WH	Left Butt w/3 Snaps	\$	17.29	ea

BMAS210-WH	Right Butt w/3 Snaps	\$ 17.29	ea
RMAS540-WH	Right Plastic Snap Master	\$ 7.07	ea
RMAS541-WH	Left Plastic Snap Master	\$ 7.07	ea
CBRA01-WH	Regular Duty Ceiling	\$ 1.25	ea
CSPL901-WH	Ceiling Splice	\$ 2.16	ea
CBRA02-WH	Klick On Ceiling Bracket	\$ 1.57	ea
CBRA04-WH	C-Type Ceiling Bracket w/ Set Screw	\$ 2.95	ea
SPL905-WH	HD Splice w/4 Screws	\$ 9.89	ea
CBRA03-WH	HD Ceiling w/Klick	\$ 2.16	ea
WBRA03-WH	3" Wall Bracket	\$ 3.21	ea
WBRA06-WH	6" Double Wall Bracket	\$ 5.30	ea
END309-WH	End Cap	\$ 1.20	ea
END305-WH	Twist On End Stop	\$ 2.13	ea
END307-SL	End Lock	\$ 0.94	ea
RET308-WH	Return Plate	\$ 8.25	ea

## D3 SERIES

page 6



D3TR	White Track 16'4"	\$ 7.30	ft
------	-------------------	---------	----

### Assembled

First 48"	\$ 129.07
Each Additional foot	\$ 15.02

*Add 10% for color other than white.*

Assembled Pricing Includes: white track cut to size, masters, carriers, end caps, brackets, and 36" fiberglass batons with snap. Freight not included.	<b>First 48"</b>	\$ 129.07	<b>144"</b>	\$ 249.19
	<b>60"</b>	\$ 144.09	<b>156"</b>	\$ 264.21
	<b>72"</b>	\$ 159.10	<b>168"</b>	\$ 279.22
	<b>84"</b>	\$ 174.12	<b>180"</b>	\$ 294.24
	<b>96"</b>	\$ 189.13	<b>192"</b>	\$ 309.25
	<b>108"</b>	\$ 204.15	<b>204"</b>	\$ 324.27
	<b>120"</b>	\$ 219.16	<b>216"</b>	\$ 339.28
	<b>132"</b>	\$ 234.18	<b>228"</b>	\$ 354.30

### Components

KCAR01-WH	Klick Carrier	\$ 0.53	ea
SCAR01-WH	Snap Carrier	\$ 0.55	ea
PCAR03-WH	Pinch Pleat Carrier	\$ 0.30	ea
BCAR04-WH	Small Ball Bearing	\$ 1.37	ea
RCARS60-WH	2 piece connected snap 60%	\$ 1.18	ea
RCARS80-WH	2 piece connected snap 80%	\$ 1.18	ea
RCARS100-WH	2 piece connected snap 100%	\$ 1.18	ea
RCARS120-WH	2 piece connected snap 120%	\$ 1.18	ea
KCAR02-WH	Stop Carrier	\$ 1.02	ea
HCAR06-WH	Carreir w/SS Hook	\$ 1.44	ea

PMAS525-WH	Pinch Pleat Master Over R	\$ 12.65	ea
PMAS526-WH	Pinch Pleat Master Under L	\$ 12.65	ea
PMAS527-WH	Pinch Pleat Master Over L	\$ 12.65	ea
PMAS528-WH	Pinch Pleat Master Under R	\$ 12.65	ea
BMAS209-WH	Left Butt w/3 Snaps	\$ 17.29	ea
BMAS210-WH	Right Butt w/3 Snaps	\$ 17.29	ea
RMAS540-WH	Right Plastic Snap Master	\$ 7.07	ea
RMAS541-WH	Left Plastic Snap Master	\$ 7.07	ea
CBRA01-WH	Regular Duty Ceiling Bracket	\$ 1.25	ea
CSPL901-WH	Ceiling Splice	\$ 2.16	ea
CBRA02-WH	Klick On Ceiling Bracket	\$ 1.57	ea
SPL905-WH	HD Splice w/4 Screws	\$ 9.89	ea
CBRA03-WH	HD Ceiling w/Klick	\$ 2.16	ea
WBRA03-WH	3" Wall Bracket	\$ 3.21	ea
WBRA06-WH	6" Double Wall Bracket	\$ 5.30	ea
END305-WH	Twist On End Stop	\$ 2.13	ea
END310-WH	End Cap w/Screw	\$ 2.13	ea
WST01-WH	Wave Stop	\$ 0.85	ea

## B9 SERIES

page 8



B9TR	White Track 12',14',16',20'	\$ 4.68	ft
B9SL	Silver 16'	\$ 5.15	ft
B9BR	Brown 16'	\$ 5.15	ft
B9BK	Black 16'	\$ 5.15	ft

### Assembled

First 48"	\$ 143.51
Each Additional foot	\$ 12.13

*Add 10% for color other than white.*

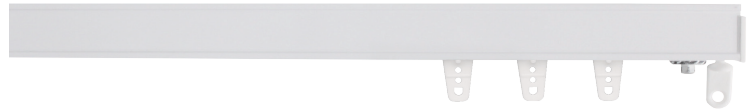
Assembled Pricing Includes: white track cut to size, masters, carriers, end caps, brackets, and 36" fiberglass batons with snap. Freight not included.	<b>First 48"</b>	\$ 143.51	<b>144"</b>	\$ 240.53
	<b>60"</b>	\$ 155.64	<b>156"</b>	\$ 252.66
	<b>72"</b>	\$ 167.76	<b>168"</b>	\$ 264.78
	<b>84"</b>	\$ 179.89	<b>180"</b>	\$ 276.91
	<b>96"</b>	\$ 192.02	<b>192"</b>	\$ 289.04
	<b>108"</b>	\$ 204.15	<b>204"</b>	\$ 301.17
	<b>120"</b>	\$ 216.27	<b>216"</b>	\$ 313.29
	<b>132"</b>	\$ 228.40	<b>228"</b>	\$ 325.42

### Components

RCARW60-WH	Wheeled connected snap 60%	\$ 1.44	ea
RCARW80-WH	Wheeled connected snap 80%	\$ 1.44	ea
RCARW100-WH	Wheeled connected snap 100%	\$ 1.44	ea
RCARW120-WH	Wheeled connected snap 120%	\$ 1.44	ea
RCARS60-WH	2 piece connected snap 60%	\$ 1.18	ea

RCARS80-WH	2 piece connected snap 80%	\$	1.18	ea
RCARS100-WH	2 piece connected snap 100%	\$	1.18	ea
RCARS120-WH	2 piece connected snap 120%	\$	1.18	ea
RCARB60-WH	B/B connected snap 60%	\$	1.91	ea
RCARB80-WH	B/B connected snap 80%	\$	1.91	ea
RCARB100-WH	B/B connected snap 100%	\$	1.91	ea
RCARB120-WH	B/B connected snap 120%	\$	1.91	ea
SCAR04-WH	Snap Carrier	\$	0.55	ea
PCAR03-WH	Pinch Pleat Carrier	\$	0.30	ea
BCAR02-WH	Slim Ball Bearing	\$	0.67	ea
BCAR05-WH	Ball Bearing w/SS Hook	\$	1.84	ea
KCAR08-WH	Slim Line Klick Carrier	\$	0.98	ea
END305-WH	Twist On End Stop	\$	2.13	ea
RMAS301-WH	Ripplefold Master w/Snap and Adaptor Over R	\$	8.78	ea
RMAS302-WH	Ripplefold Master w/Snap and Adaptor Under L	\$	8.78	ea
PMAS101-WH	Pinch Pleat Master Multifunctional Over R	\$	6.94	ea
PMAS102-WH	Pinch Pleat Master Multifunctional Under L	\$	6.94	ea
RMAS305-WH	Ripplefold Multifunctional Master NO Snaps Over R	\$	7.23	ea
RMAS306-WH	Ripplefold Multifunctional Master NO Snaps Under L	\$	7.23	ea
PMAS103-WH	Pinch Pleat Master for Stiffeners Only Over R	\$	6.94	ea
PMAS104-WH	Pinch Pleat Master for Stiffeners Only Under L	\$	6.94	ea
BMAS209-WH	Butt Master w/3 Snaps Left	\$	17.29	ea
BMAS210-WH	Butt Master w/3 Snaps Right	\$	17.29	ea
BMAS403-WH	Wheeled Butt Master Right	\$	31.10	ea
BMAS404-WH	Wheeled Butt Master Left	\$	31.10	ea
BMAS401-WH	2-Piece Butt Master Right	\$	26.28	ea
BMAS402-WH	2-Piece Butt Master Left	\$	26.28	ea
PMAS108-WH	Master for Curves and Bends Over R	\$	12.71	ea
PMAS109-WH	Master for Curves and Bends Under L	\$	12.71	ea
CBRA01-WH	Regular Duty Ceiling Bracket	\$	1.25	ea
CSPL901-WH	Ceiling Splice	\$	2.16	ea
CBRA02-WH	Klick On Ceiling Bracket	\$	1.57	ea
CBRA03-WH	HD Ceiling w/Klick Bracket	\$	2.16	ea
CBRA04-WH	C-Type Ceiling Bracket w/Set Screw	\$	2.95	ea
SPL903-WH	HD Splice w/4 Screws	\$	18.54	ea
WBRA03-WH	3" Wall Bracket	\$	3.21	ea
WBRA06-WH	6" Double Wall Bracket	\$	5.30	ea
END301-WH	End Cap w/Slide	\$	1.17	ea
END302-WH	End Cap w/Return Plate Right	\$	2.25	ea
END303-WH	End Cap w/Return Plate Left	\$	2.25	ea
END307-SL	End Lock	\$	0.94	ea
RET309-WH	Plastic 2" Return Right	\$	5.64	ea
RET310-WH	Plastic 2" Return Left	\$	5.64	ea
RET308-WH	Metal Return Plate	\$	8.25	ea

# N9 SERIES



N9TR	White 16'	\$	9.96	ft
------	-----------	----	------	----

### Assembled

First 48"	\$	182.20
Each Additional foot	\$	16.46

<p>Assembled Pricing Includes: white track cut to size, masters, carriers, end caps, and 36" fiberglass batons with snap. Freight not included.</p>	<b>First 48"</b>	\$ 182.20	<b>144"</b>	\$ 313.87
	<b>60"</b>	\$ 198.66	<b>156"</b>	\$ 330.33
	<b>72"</b>	\$ 215.12	<b>168"</b>	\$ 346.79
	<b>84"</b>	\$ 231.58	<b>180"</b>	\$ 363.25
	<b>96"</b>	\$ 248.04	<b>192"</b>	\$ 379.71
	<b>108"</b>	\$ 264.50	<b>204"</b>	\$ 396.17
	<b>120"</b>	\$ 280.95	<b>216"</b>	\$ 412.62
	<b>132"</b>	\$ 297.41	<b>228"</b>	\$ 429.08

### Components

RCARW60-WH	Wheeled connected snap 60%	\$	1.44	ea
RCARW80-WH	Wheeled connected snap 80%	\$	1.44	ea
RCARW100-WH	Wheeled connected snap 100%	\$	1.44	ea
RCARW120-WH	Wheeled connected snap 120%	\$	1.44	ea
RCARS60-WH	2 piece connected snap 60%	\$	1.18	ea
RCARS80-WH	2 piece connected snap 80%	\$	1.18	ea
RCARS100-WH	2 piece connected snap 100%	\$	1.18	ea
RCARS120-WH	2 piece connected snap 120%	\$	1.18	ea
RCARB60-WH	B/B connected snap 60%	\$	1.91	ea
RCARB80-WH	B/B connected snap 80%	\$	1.91	ea
RCARB100-WH	B/B connected snap 100%	\$	1.91	ea
RCARB120-WH	B/B connected snap 120%	\$	1.91	ea
SCAR04-WH	Snap Carrier	\$	0.55	ea
PCAR03-WH	Pinch Pleat Carrier	\$	0.30	ea
BCAR02-WH	Slim Ball Bearing	\$	0.67	ea
BCAR05-WH	Ball Bearing w/SS Hook	\$	1.84	ea
KCAR08-WH	Slim Line Klick Carrier	\$	0.98	ea
END305-WH	Twist On End Stop	\$	2.13	ea
RMAS301-WH	Ripplefold Master w/Snap and Adaptor Over R	\$	8.78	ea
RMAS302-WH	Ripplefold Master w/Snap and Adaptor Under L	\$	8.78	ea
PMAS101-WH	Pinch Pleat Master Multifunctional Over R	\$	6.94	ea
PMAS102-WH	Pinch Pleat Master Multifunctional Under L	\$	6.94	ea
RMAS305-WH	Ripplefold Multifunctional Master NO Snaps Over R	\$	7.23	ea
RMAS306-WH	Ripplefold Multifunctional Master NO Snaps Under L	\$	7.23	ea
PMAS103-WH	Pinch Pleat Master for Stiffeners Only Over R	\$	6.94	ea
PMAS104-WH	Pinch Pleat Master for Stiffeners Only Under L	\$	6.94	ea
BMAS209-WH	Butt Master w/3 Snaps Left	\$	17.29	ea
BMAS210-WH	Butt Master w/3 Snaps Right	\$	17.29	ea

BMAS403-WH	Wheeled Butt Master Right	\$ 31.10	ea
BMAS404-WH	Wheeled Butt Master Left	\$ 31.10	ea
BMAS401-WH	2-Piece Butt Master Right	\$ 26.28	ea
BMAS402-WH	2-Piece Butt Master Left	\$ 26.28	ea
PMAS108-WH	Master for Curves and Bends Over R	\$ 12.71	ea
PMAS109-WH	Master for Curves and Bends Under L	\$ 12.71	ea
END301-WH	End Cap w/Slide	\$ 1.17	ea
END302-WH	End Cap w/Return Plate Right	\$ 2.25	ea
END303-WH	End Cap w/Return Plate Left	\$ 2.25	ea
END307-SL	End Lock	\$ 0.94	ea
RET309-WH	Plastic 2" Return Right	\$ 5.64	ea
RET310-WH	Plastic 2" Return Left	\$ 5.64	ea
RET308-WH	Metal Return Plate	\$ 8.25	ea

## E9 SERIES

page 10



E9TR	White Track 12', 14', 16', 18'	\$ 4.24	ft
E9SL	Silver 16'	\$ 5.64	ft
E9BK	Black 16'	\$ 5.64	ft

### Assembled

First 48"	\$ 148.13
Each Additional foot	\$ 12.71

Add 10% for color other than white.

Assembled Pricing Includes: white track cut to size, masters, carriers, end caps, brackets, and 36" fiberglass batons with snap. Freight not included.	<b>First 48"</b>	\$ 148.13	<b>144"</b>	\$ 249.77
	<b>60"</b>	\$ 160.83	<b>156"</b>	\$ 262.47
	<b>72"</b>	\$ 173.54	<b>168"</b>	\$ 275.18
	<b>84"</b>	\$ 186.24	<b>180"</b>	\$ 287.88
	<b>96"</b>	\$ 198.95	<b>192"</b>	\$ 300.59
	<b>108"</b>	\$ 211.65	<b>204"</b>	\$ 313.29
	<b>120"</b>	\$ 224.36	<b>216"</b>	\$ 326.00
	<b>132"</b>	\$ 237.06	<b>228"</b>	\$ 338.70

### Components

RCARW60-WH	Wheeled connected snap 60%	\$ 1.44	ea
RCARW80-WH	Wheeled connected snap 80%	\$ 1.44	ea
RCARW100-WH	Wheeled connected snap 100%	\$ 1.44	ea
RCARW120-WH	Wheeled connected snap 120%	\$ 1.44	ea
RCARS60-WH	2 piece connected snap 60%	\$ 1.18	ea
RCARS80-WH	2 piece connected snap 80%	\$ 1.18	ea
RCARS100-WH	2 piece connected snap 100%	\$ 1.18	ea
RCARS120-WH	2 piece connected snap 120%	\$ 1.18	ea
RCARB60-WH	B/B connected snap 60%	\$ 1.91	ea

RCARB80-WH	B/B connected snap 80%	\$	1.91	ea
RCARB100-WH	B/B connected snap 100%	\$	1.91	ea
RCARB120-WH	B/B connected snap 120%	\$	1.91	ea
SCAR04-WH	Snap Carrier	\$	0.55	ea
PCAR03-WH	Pinch Pleat Carrier	\$	0.30	ea
BCAR02-WH	Slim Ball Bearing	\$	0.67	ea
BCAR05-WH	Ball Bearing w/SS Hook	\$	1.84	ea
KCAR08-WH	Slim Line Klick Carrier	\$	0.98	ea
END305-WH	Twist On End Stop	\$	2.13	ea
RMAS301-WH	Ripplefold Master w/Snap and Adaptor Over R	\$	8.78	ea
RMAS302-WH	Ripplefold Master w/Snap and Adaptor Under L	\$	8.78	ea
PMAS101-WH	Pinch Pleat Master Multifunctional Over R	\$	6.94	ea
PMAS102-WH	Pinch Pleat Master Multifunctional Under L	\$	6.94	ea
RMAS305-WH	Ripplefold Multifunctional Master NO Snaps Over R	\$	7.23	ea
RMAS306-WH	Ripplefold Multifunctional Master NO Snaps Under L	\$	7.23	ea
PMAS103-WH	Pinch Pleat Master for Stiffeners Only Over R	\$	6.94	ea
PMAS104-WH	Pinch Pleat Master for Stiffeners Only Under L	\$	6.94	ea
BMAS209-WH	Butt Master w/3 Snaps Left	\$	17.29	ea
BMAS210-WH	Butt Master w/3 Snaps Right	\$	17.29	ea
BMAS403-WH	Wheeled Butt Master Right	\$	31.10	ea
BMAS404-WH	Wheeled Butt Master Left	\$	31.10	ea
BMAS401-WH	2-Piece Butt Master Right	\$	26.28	ea
BMAS402-WH	2-Piece Butt Master Left	\$	26.28	ea
PMAS108-WH	Master for Curves and Bends Over R	\$	12.71	ea
PMAS109-WH	Master for Curves and Bends Under L	\$	12.71	ea
ECBR01-WH	Ceiling Bracket CamLock	\$	1.61	ea
EWBR03-WH	3" Wall Bracket with Metal CamLock	\$	4.24	ea
EWBR06-WH	6" Double Wall Bracket with Metal CamLock	\$	5.24	ea
SPL907-SL	Splice w/Screws	\$	18.66	ea
END301-WH	End Cap w/Slide	\$	1.17	ea
END302-WH	End Cap w/Return Plate Right	\$	2.25	ea
END303-WH	End Cap w/Return Plate Left	\$	2.25	ea
END307-SL	End Lock	\$	0.94	ea
RET309-WH	Plastic 2" Return Right	\$	5.64	ea
RET310-WH	Plastic 2" Return Left	\$	5.64	ea
RET308-WH	Metal Return Plate	\$	8.25	ea

## DE9 SERIES

page 11



DE9TR	White Track 16'	\$	8.19	ft
DE9SL	Silver 16'	\$	9.49	ft
DE9BK	Black 16'	\$	9.49	ft

### Assembled

First 48"		\$	177.58	
Each Additional foot		\$	16.75	

Add 10% for color other than white.

Assembled Pricing Includes: white track cut to size, masters, carriers, end caps, brackets, and 36" fiberglass batons with snap. Freight not included.	<b>First 48"</b>	\$ 177.58	<b>144"</b>	\$ 311.56
	<b>60"</b>	\$ 194.33	<b>156"</b>	\$ 328.31
	<b>72"</b>	\$ 211.08	<b>168"</b>	\$ 345.06
	<b>84"</b>	\$ 227.82	<b>180"</b>	\$ 361.80
	<b>96"</b>	\$ 244.57	<b>192"</b>	\$ 378.55
	<b>108"</b>	\$ 261.32	<b>204"</b>	\$ 395.30
	<b>120"</b>	\$ 278.07	<b>216"</b>	\$ 412.05
	<b>132"</b>	\$ 294.81	<b>228"</b>	\$ 428.79

### Components

RCARW60-WH	Wheeled connected snap 60%	\$ 1.44	ea
RCARW80-WH	Wheeled connected snap 80%	\$ 1.44	ea
RCARW100-WH	Wheeled connected snap 100%	\$ 1.44	ea
RCARW120-WH	Wheeled connected snap 120%	\$ 1.44	ea
RCARS60-WH	2 piece connected snap 60%	\$ 1.18	ea
RCARS80-WH	2 piece connected snap 80%	\$ 1.18	ea
RCARS100-WH	2 piece connected snap 100%	\$ 1.18	ea
RCARS120-WH	2 piece connected snap 120%	\$ 1.18	ea
RCARB60-WH	B/B connected snap 60%	\$ 1.91	ea
RCARB80-WH	B/B connected snap 80%	\$ 1.91	ea
RCARB100-WH	B/B connected snap 100%	\$ 1.91	ea
RCARB120-WH	B/B connected snap 120%	\$ 1.91	ea
SCAR04-WH	Snap Carrier	\$ 0.55	ea
PCAR03-WH	Pinch Pleat Carrier	\$ 0.30	ea
BCAR02-WH	Slim Ball Bearing	\$ 0.67	ea
BCAR05-WH	Ball Bearing w/SS Hook	\$ 1.84	ea
KCAR08-WH	Slim Line Klick Carrier	\$ 0.98	ea
END305-WH	Twist On End Stop	\$ 2.13	ea
RMAS301-WH	Ripplefold Master w/Snap and Adaptor Over R	\$ 8.78	ea
RMAS302-WH	Ripplefold Master w/Snap and Adaptor Under L	\$ 8.78	ea
PMAS101-WH	Pinch Pleat Master Multifunctional Over R	\$ 6.94	ea
PMAS102-WH	Pinch Pleat Master Multifunctional Under L	\$ 6.94	ea
RMAS305-WH	Ripplefold Multifunctional Master NO Snaps Over R	\$ 7.23	ea
RMAS306-WH	Ripplefold Multifunctional Master NO Snaps Under L	\$ 7.23	ea
PMAS103-WH	Pinch Pleat Master for Stiffeners Only Over R	\$ 6.94	ea
PMAS104-WH	Pinch Pleat Master for Stiffeners Only Under L	\$ 6.94	ea
BMAS209-WH	Butt Master w/3 Snaps Left	\$ 17.29	ea
BMAS210-WH	Butt Master w/3 Snaps Right	\$ 17.29	ea
BMAS403-WH	Wheeled Butt Master Right	\$ 31.10	ea
BMAS404-WH	Wheeled Butt Master Left	\$ 31.10	ea
BMAS401-WH	2-Piece Butt Master Right	\$ 26.28	ea
BMAS402-WH	2-Piece Butt Master Left	\$ 26.28	ea
PMAS108-WH	Master for Curves and Bends Over R	\$ 12.71	ea
PMAS109-WH	Master for Curves and Bends Under L	\$ 12.71	ea
ECBR01-WH	Ceiling Bracket CamLock	\$ 1.61	ea



EWBR03-WH	3" Wall Bracket with Metal CamLock	\$	4.24	ea
EWBR06-WH	6" Double Wall Bracket with Metal CamLock	\$	5.24	ea
SPL907-SL	Splice w/Screws	\$	18.66	ea
END301-WH	End Cap w/Slide	\$	1.17	ea
END302-WH	End Cap w/Return Plate Right	\$	2.25	ea
EMD303-WH	End Cap w/Return Plate Left	\$	2.25	ea
END307-SL	End Lock	\$	0.94	ea
RET309-WH	Plastic 2" Return Right	\$	5.64	ea
RET310-WH	Plastic 2" Return Left	\$	5.64	ea
RET308-WH	Metal Return Plate	\$	8.25	ea

## L9 SERIES

page 12



L9TR	White Track 12',14',16',18'	\$	5.78	ft
L9SL	Silver 16'	\$	6.36	ft
L9BK	Black 16'	\$	6.36	ft

### Assembled

First 48"	\$	128.78
Each Additional foot	\$	10.97

*Add 10% for color other than white.*

<p>Assembled Pricing Includes: white track cut to size, masters, carriers, end caps, and 36" fiberglass batons with snap. Freight not included.</p>	<b>First 48"</b>	\$ 128.78	<b>144"</b>	\$ 216.56
	<b>60"</b>	\$ 139.76	<b>156"</b>	\$ 227.54
	<b>72"</b>	\$ 150.73	<b>168"</b>	\$ 238.51
	<b>84"</b>	\$ 161.70	<b>180"</b>	\$ 249.48
	<b>96"</b>	\$ 172.67	<b>192"</b>	\$ 260.45
	<b>108"</b>	\$ 183.65	<b>204"</b>	\$ 271.43
	<b>120"</b>	\$ 194.62	<b>216"</b>	\$ 282.40
	<b>132"</b>	\$ 205.59	<b>228"</b>	\$ 293.37

### Components

RCARW60-WH	Wheeled connected snap 60%	\$	1.44	ea
RCARW80-WH	Wheeled connected snap 80%	\$	1.44	ea
RCARW100-WH	Wheeled connected snap 100%	\$	1.44	ea
RCARW120-WH	Wheeled connected snap 120%	\$	1.44	ea
RCARS60-WH	2 piece connected snap 60%	\$	1.18	ea
RCARS80-WH	2 piece connected snap 80%	\$	1.18	ea
RCARS100-WH	2 piece connected snap 100%	\$	1.18	ea
RCARS120-WH	2 piece connected snap 120%	\$	1.18	ea
RCARB60-WH	B/B connected snap 60%	\$	1.91	ea
RCARB80-WH	B/B connected snap 80%	\$	1.91	ea
RCARB100-WH	B/B connected snap 100%	\$	1.91	ea
RCARB120-WH	B/B connected snap 120%	\$	1.91	ea
SCAR04-WH	Snap Carrier	\$	0.55	ea
PCAR03-WH	Pinch Pleat Carrier	\$	0.30	ea

BCAR02-WH	Slim Ball Bearing	\$	0.67	ea
BCAR05-WH	Ball Bearing w/SS Hook	\$	1.84	ea
KCAR08-WH	Slim Line Klick Carrier	\$	0.98	ea
END305-WH	Twist On End Stop	\$	2.13	ea
RMAS301-WH	Ripplefold Master w/Snap and Adaptor Over R	\$	8.78	ea
RMAS302-WH	Ripplefold Master w/Snap and Adaptor Under L	\$	8.78	ea
PMAS101-WH	Pinch Pleat Master Multifunctional Over R	\$	6.94	ea
PMAS102-WH	Pinch Pleat Master Multifunctional Under L	\$	6.94	ea
RMAS305-WH	Ripplefold Multifunctional Master NO Snaps Over R	\$	7.23	ea
RMAS306-WH	Ripplefold Multifunctional Master NO Snaps Under L	\$	7.23	ea
PMAS103-WH	Pinch Pleat Master for Stiffeners Only Over R	\$	6.94	ea
PMAS104-WH	Pinch Pleat Master for Stiffeners Only Under L	\$	6.94	ea
BMAS209-WH	Butt Master w/3 Snaps Left	\$	17.29	ea
BMAS210-WH	Butt Master w/3 Snaps Right	\$	17.29	ea
BMAS403-WH	Wheeled Butt Master Right	\$	31.10	ea
BMAS404-WH	Wheeled Butt Master Left	\$	31.10	ea
BMAS401-WH	2-Piece Butt Master Right	\$	26.28	ea
BMAS402-WH	2-Piece Butt Master Left	\$	26.28	ea
PMAS108-WH	Master for Curves and Bends Over R	\$	12.71	ea
PMAS109-WH	Master for Curves and Bends Under L	\$	12.71	ea
END301-WH	End Cap w/Slide	\$	1.17	ea
END302-WH	End Cap w/Return Plate Right	\$	2.25	ea
EMD303-WH	End Cap w/Return Plate Left	\$	2.25	ea
END307-SL	End Lock	\$	0.94	ea
RET309-WH	Plastic 2" Return Right	\$	5.64	ea
RET310-WH	Plastic 2" Return Left	\$	5.64	ea
RET308-WH	Metal Return Plate	\$	8.25	ea

## DL9 SERIES

page 13



DL9TR	White Track 16'	\$	8.97	ft
DL9SL	Silver 16'	\$	10.15	ft
DL9BK	Black 16'	\$	10.15	ft

### Assembled

First 48"	\$	177.58
Each Additional foot	\$	16.46

Add 10% for color other than white.

Assembled Pricing Includes: white track cut to size, masters, carriers, end caps, and 36" fiberglass batons with snap. Freight not included.	<b>First 48"</b>	\$ 177.58	<b>144"</b>	\$ 309.25
	<b>60"</b>	\$ 194.04	<b>156"</b>	\$ 325.71
	<b>72"</b>	\$ 210.50	<b>168"</b>	\$ 342.17
	<b>84"</b>	\$ 226.96	<b>180"</b>	\$ 358.63
	<b>96"</b>	\$ 243.42	<b>192"</b>	\$ 375.09
	<b>108"</b>	\$ 259.88	<b>204"</b>	\$ 391.55
	<b>120"</b>	\$ 276.33	<b>216"</b>	\$ 408.00
	<b>132"</b>	\$ 292.79	<b>228"</b>	\$ 424.46

## COMPONENTS FOR B9, N9, E9, DE9, L9 AND DL9 SERIES *page 14*

RCARW60-WH	Wheeled connected snap 60%	\$ 1.44	ea
RCARW80-WH	Wheeled connected snap 80%	\$ 1.44	ea
RCARW100-WH	Wheeled connected snap 100%	\$ 1.44	ea
RCARW120-WH	Wheeled connected snap 120%	\$ 1.44	ea
RCARS60-WH	2 piece connected snap 60%	\$ 1.18	ea
RCARS80-WH	2 piece connected snap 80%	\$ 1.18	ea
RCARS100-WH	2 piece connected snap 100%	\$ 1.18	ea
RCARS120-WH	2 piece connected snap 120%	\$ 1.18	ea
RCARB60-WH	B/B connected snap 60%	\$ 1.91	ea
RCARB80-WH	B/B connected snap 80%	\$ 1.91	ea
RCARB100-WH	B/B connected snap 100%	\$ 1.91	ea
RCARB120-WH	B/B connected snap 120%	\$ 1.91	ea
SCAR04-WH	Snap Carrier	\$ 0.55	ea
PCAR03-WH	Pinch Pleat Carrier	\$ 0.30	ea
BCAR02-WH	Slim Ball Bearing	\$ 0.67	ea
BCAR05-WH	Ball Bearing w/SS Hook	\$ 1.84	ea
KCAR08-WH	Slim Line Klick Carrier	\$ 0.98	ea
END305-WH	Twist On End Stop	\$ 2.13	ea
RMAS301-WH	Ripplefold Master w/Snap and Adaptor Over R	\$ 8.78	ea
RMAS302-WH	Ripplefold Master w/Snap and Adaptor Under L	\$ 8.78	ea
PMAS101-WH	Pinch Pleat Master Multifunctional Over R	\$ 6.94	ea
PMAS102-WH	Pinch Pleat Master Multifunctional Under L	\$ 6.94	ea
RMAS305-WH	Ripplefold Multifunctional Master NO Snaps Over R	\$ 7.23	ea
RMAS306-WH	Ripplefold Multifunctional Master NO Snaps Under L	\$ 7.23	ea
PMAS103-WH	Pinch Pleat Master for Stiffeners Only Over R	\$ 6.94	ea
PMAS104-WH	Pinch Pleat Master for Stiffeners Only Under L	\$ 6.94	ea
BMAS209-WH	Butt Master w/3 Snaps Left	\$ 17.29	ea
BMAS210-WH	Butt Master w/3 Snaps Right	\$ 17.29	ea
BMAS403-WH	Wheeled Butt Master Right	\$ 31.10	ea
BMAS404-WH	Wheeled Butt Master Left	\$ 31.10	ea
BMAS401-WH	2-Piece Butt Master Right	\$ 26.28	ea
BMAS402-WH	2-Piece Butt Master Left	\$ 26.28	ea
PMAS108-WH	Master for Curves and Bends Over R	\$ 12.71	ea
PMAS109-WH	Master for Curves and Bends Under L	\$ 12.71	ea
END301-WH	End Cap w/Slide	\$ 1.17	ea
END302-WH	End Cap w/Return Plate Right	\$ 2.25	ea
EMD303-WH	End Cap w/Return Plate Left	\$ 2.25	ea
END307-SL	End Lock	\$ 0.94	ea

RET309-WH	Plastic 2" Return Right	\$	5.64	ea
RET310-WH	Plastic 2" Return Left	\$	5.64	ea
RET308-WH	Metal Return Plate	\$	8.25	ea

## C6 SERIES

page 16



C6TR	White Track 12',14',16',20'	\$	6.08	ft
C6SL	Silver 16'	\$	6.68	ft
C6BR	Brown 16'	\$	6.68	ft
C6BK	Black 16'	\$	6.68	ft

### Assembled

First 48"	\$	218.87
Each Additional foot	\$	18.48

Add 10% for color other than white.

Assembled Pricing Includes: white track cut to size, masters, carriers, end pulleys, cord, and tension pulley. Freight not included.	<b>First 48"</b>	\$	218.87	<b>144"</b>	\$	366.71
	<b>60"</b>	\$	237.35	<b>156"</b>	\$	385.19
	<b>72"</b>	\$	255.83	<b>168"</b>	\$	403.67
	<b>84"</b>	\$	274.31	<b>180"</b>	\$	422.15
	<b>96"</b>	\$	292.79	<b>192"</b>	\$	440.63
	<b>108"</b>	\$	311.27	<b>204"</b>	\$	459.11
	<b>120"</b>	\$	329.75	<b>216"</b>	\$	477.59
	<b>132"</b>	\$	348.23	<b>228"</b>	\$	496.07

### Components

PCAR03-WH	Pinch Pleat Carrier	\$	0.30	ea
KCAR08-WH	Slim Line Klick Carrier	\$	0.98	ea
BCAR04-WH	Small Ball Bearing Carrier	\$	1.37	ea
RCARS60-WH	2 piece connected snap 60%	\$	1.18	ea
RCARS80-WH	2 piece connected snap 80%	\$	1.18	ea
RCARS100-WH	2 piece connected snap 100%	\$	1.18	ea
RCARS120-WH	2 piece connected snap 120%	\$	1.18	ea
END305-WH	Twist On End Stop	\$	2.13	ea
PMAS108-WH	Cord Master Carrier for Bends and Curves Over R	\$	12.71	ea
PMAS109-WH	Cord Master Carrier for Bends and Curves Under L	\$	12.71	ea
RMAS308-WH	Cord Master w/Snaps Over R	\$	15.33	ea
RMAS309-WH	Cord Master w/Snaps Under L	\$	15.33	ea
BMAS209-WH	Butt Master w/3 Snaps Left	\$	17.29	ea
BMAS210-WH	Butt Master w/3 Snaps Right	\$	17.29	ea
CBRA01-WH	Regular Duty Ceiling Bracket	\$	1.25	ea
CSPL901-WH	Ceiling Splice	\$	2.16	ea
CBRA02-WH	Klick On Ceiling Bracket	\$	1.57	ea
CBRA04-WH	C-Type Ceiling Bracket w/Set Screw	\$	2.95	ea

CBRA03-WH	HD Ceiling w/Klick Bracket	\$	2.16	ea
WBRA03-WH	3" Wall Bracket	\$	3.21	ea
WBRA06-WH	6" Double Wall Bracket	\$	5.30	ea
SPL903-WH	HD Splice w/4 Screws	\$	18.54	ea
C6RT01-WH	Return Insert w/Snap	\$	6.10	ea
C6EN01-WH	End Pulley	\$	11.13	ea
C6EN02-WH	End Pulley w/Snap Right	\$	12.19	ea
C6EN04-WH	End Pulley w/Snap Left	\$	12.19	ea
C6EN03-WH	Small End Pulley	\$	11.13	ea
C6CON10-WH	Cord Connector	\$	2.29	ea
COR01-WH	Non-Stretch Cord	\$	1.82	yd
CTEN01-WH	Tension Device	\$	4.70	ea
CTEN04-WH	Child Safety Tension Device	\$	8.58	ea

## C7 SERIES

page 18



C7TR	White Track 16'	\$	12.31	ft
C7BR	Brown 16'	\$	14.15	ft
C7BK	Black 16'	\$	14.15	ft

### Assembled

First 48"	\$	266.81
Each Additional foot	\$	23.97

Add 10% for color other than white.

Assembled Pricing Includes: white track cut to size, masters, carriers, end pulleys, cord, and tension pulley. Freight not included.	<b>First 48"</b>	\$ 266.81	<b>144"</b>	\$ 458.54
	<b>60"</b>	\$ 290.77	<b>156"</b>	\$ 482.50
	<b>72"</b>	\$ 314.74	<b>168"</b>	\$ 506.47
	<b>84"</b>	\$ 338.70	<b>180"</b>	\$ 530.43
	<b>96"</b>	\$ 362.67	<b>192"</b>	\$ 554.40
	<b>108"</b>	\$ 386.64	<b>204"</b>	\$ 578.37
	<b>120"</b>	\$ 410.60	<b>216"</b>	\$ 602.33
	<b>132"</b>	\$ 434.57	<b>228"</b>	\$ 626.30

### Components

BCAR02-WH	Slim Ball Bearing Carrier	\$	0.67	ea
RCARW60-WH	Wheeled connected snap 60%	\$	1.44	ea
RCARW80-WH	Wheeled connected snap 80%	\$	1.44	ea
RCARW100-WH	Wheeled connected snap 100%	\$	1.44	ea
RCARW120-WH	Wheeled connected snap 120%	\$	1.44	ea
C7PMO-WH	Overlap Master for Pinch Pleat	\$	21.48	ea
C7PMU-WH	Underlap Master for Pinch Pleat	\$	21.48	ea
C7RMO-WH	Overlap Master for Ripplefold	\$	24.69	ea
C7RMU-WH	Underlap Master for Ripplefold	\$	24.69	ea
C7CB01-WH	C7 HD Ceiling Bracket	\$	13.56	ea
C7WB03-WH	C7 HD Single Wall Bracket	\$	20.82	ea

C7WB06-WH	C7 HD Double Wall Bracket	\$ 44.66	ea
COR01-WH	Non-Stretch Cord	\$ 1.82	yd
CTEN01-WH	Tension Device	\$ 4.70	ea
CTEN04-WH	Child Safety Tension Device	\$ 8.58	ea

**M6FX SERIES** *page 20*



M6TR	White Track 23'	\$ 7.00	ft
M6BK	Black 19'	\$ 7.69	ft

**Assembled "S" Class Motor**

First 48"	\$2,089.11
Each Additional foot	\$ 36.09

Assembled Pricing Includes: white track cut to size, masters, carriers, end caps pulleys, belt connector, motor "S", RF remote, and power supply. Freight not included.	<b>First 48"</b>	\$2,089.11	<b>144"</b>	\$2,377.86
	<b>60"</b>	\$2,125.20	<b>156"</b>	\$2,413.95
	<b>72"</b>	\$2,161.29	<b>168"</b>	\$2,450.04
	<b>84"</b>	\$2,197.39	<b>180"</b>	\$2,486.14
	<b>96"</b>	\$2,233.48	<b>192"</b>	\$2,522.23
	<b>108"</b>	\$2,269.58	<b>204"</b>	\$2,558.33
	<b>120"</b>	\$2,305.67	<b>216"</b>	\$2,594.42
	<b>132"</b>	\$2,341.76	<b>228"</b>	\$2,630.51

**Assembled "M" Class Motor**

First 48"	\$2,338.01
Each Additional foot	\$ 36.09

Assembled Pricing Includes: white track cut to size, masters, carriers, end caps pulleys, belt connector, motor "M", RF remote, and power supply. Freight not included.	<b>First 48"</b>	\$2,338.01	<b>144"</b>	\$2,626.76
	<b>60"</b>	\$2,374.10	<b>156"</b>	\$2,662.85
	<b>72"</b>	\$2,410.20	<b>168"</b>	\$2,698.95
	<b>84"</b>	\$2,446.29	<b>180"</b>	\$2,735.04
	<b>96"</b>	\$2,482.38	<b>192"</b>	\$2,771.13
	<b>108"</b>	\$2,518.48	<b>204"</b>	\$2,807.23
	<b>120"</b>	\$2,554.57	<b>216"</b>	\$2,843.32
	<b>132"</b>	\$2,590.67	<b>228"</b>	\$2,879.42

**Assembled "I" Class Motor**

First 48"	\$2,316.06
Each Additional foot	\$ 36.09

Assembled Pricing Includes: white track cut to size, masters, carriers, end caps pulleys, belt connector, motor "I", RF remote, and power supply. Freight not included.	<b>First 48"</b>	\$2,316.06	<b>144"</b>	\$2,604.81
	<b>60"</b>	\$2,352.16	<b>156"</b>	\$2,640.91
	<b>72"</b>	\$2,388.25	<b>168"</b>	\$2,677.00
	<b>84"</b>	\$2,424.35	<b>180"</b>	\$2,713.10
	<b>96"</b>	\$2,460.44	<b>192"</b>	\$2,749.19
	<b>108"</b>	\$2,496.53	<b>204"</b>	\$2,785.28
	<b>120"</b>	\$2,532.63	<b>216"</b>	\$2,821.38
	<b>132"</b>	\$2,568.72	<b>228"</b>	\$2,857.47

*Add 10% for color other than white.*

### Components

RFC15-WH	RF Multi Remote 15 Ch	\$ 425.72	ea
RFW02-WH	RF Wireless Wall Switch with 2 Channels	\$ 209.54	ea
RFW16-WH	RF Wireless Wall Switch with 15 Channels w/Timer	\$ 366.27	ea
BEXPRO-WH	Smart IP Bridge for Automation	\$ 404.25	ea
M6S939-WH	"S" Class Motor	\$ 1,062.91	ea
M6M927-WH	"M" Class Motor	\$ 1,312.28	ea
M6I926-WH	"I" Class Motor	\$ 1,305.06	ea
RCARS60-WH	2 piece connected snap 60%	\$ 1.18	ea
RCARS80-WH	2 piece connected snap 80%	\$ 1.18	ea
RCARS100-WH	2 piece connected snap 100%	\$ 1.18	ea
RCARS120-WH	2 piece connected snap 120%	\$ 1.18	ea
KCAR08-WH	Slim Line Klick Carrier	\$ 0.98	ea
BCAR04-WH	Small Ball Bearing Carrier	\$ 1.37	ea
RMAS308-WH	Cord Master w/Snaps Over R	\$ 15.33	ea
RMAS309-WH	Cord Master w/Snaps Under L	\$ 15.33	ea
PMAS108-WH	Master for Curves and Bends Over R	\$ 12.71	ea
PMAS109-WH	Master for Curves and Bends Under L	\$ 12.71	ea
BMAS209-WH	Butt Master w/3 Snaps Left	\$ 17.29	ea
BMAS210-WH	Butt Master w/3 Snaps Right	\$ 17.29	ea
CBRA01-WH	Regular Duty Ceiling Bracket	\$ 1.25	ea
CSPL901-WH	Ceiling Splice	\$ 2.16	ea
CBRA02-WH	Klick On Ceiling Bracket	\$ 1.57	ea
CBRA04-WH	C-Type Ceiling Bracket w/Set Screw	\$ 2.95	ea
CBRA03-WH	HD Ceiling w/Klick Bracket	\$ 2.16	ea
SPL903-WH	HD Splice w/4 Screws	\$ 18.54	ea
WBRA03-WH	3" Wall Bracket	\$ 3.21	ea
WBRA06-WH	6" Double Wall Bracket	\$ 5.30	ea
M6P903-WH	Motor Pulley	\$ 99.34	ea
M6P910-WH	Return Pulley	\$ 37.09	ea
BCON12-WH	Transport Belt Connector	\$ 10.49	ea
MBE01	Reinforced Transport Belt for Motorized Systems	\$ 10.13	ft



M6TR	\$ 7.00	ft
M6BK	\$ 7.69	ft

**Assembled "Ultra 35" Class Motor**

First 48"	\$ 2,455.24
Each Additional foot	\$ 36.09

Assembled Pricing Includes: white track cut to size, masters, carriers, end caps pulleys, belt connector, motor "Ultra 35", RF remote, and power supply. Freight not included.	<b>First 48"</b>	\$2,455.24	<b>144"</b>	\$2,743.99
	<b>60"</b>	\$2,491.34	<b>156"</b>	\$2,780.09
	<b>72"</b>	\$2,527.43	<b>168"</b>	\$2,816.18
	<b>84"</b>	\$2,563.52	<b>180"</b>	\$2,852.27
	<b>96"</b>	\$2,599.62	<b>192"</b>	\$2,888.37
	<b>108"</b>	\$2,635.71	<b>204"</b>	\$2,924.46
	<b>120"</b>	\$2,671.80	<b>216"</b>	\$2,960.55
	<b>132"</b>	\$2,707.90	<b>228"</b>	\$2,996.65

**Assembled "Ultra 60" Class Motor**

First 48"	\$ 2,934.28
Each Additional foot	\$ 36.09

Assembled Pricing Includes: white track cut to size, masters, carriers, end caps pulleys, belt connector, motor "Ultra 60", RF remote, and power supply. Freight not included.	<b>First 48"</b>	\$2,934.28	<b>144"</b>	\$3,223.03
	<b>60"</b>	\$2,970.37	<b>156"</b>	\$3,259.12
	<b>72"</b>	\$3,006.47	<b>168"</b>	\$3,295.22
	<b>84"</b>	\$3,042.56	<b>180"</b>	\$3,331.31
	<b>96"</b>	\$3,078.65	<b>192"</b>	\$3,367.40
	<b>108"</b>	\$3,114.75	<b>204"</b>	\$3,403.50
	<b>120"</b>	\$3,150.84	<b>216"</b>	\$3,439.59
	<b>132"</b>	\$3,186.93	<b>228"</b>	\$3,475.68

**Assembled "I-45" Class Motor**

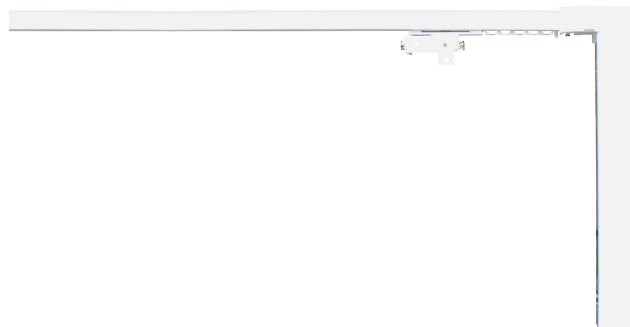
First 48"	\$ 2,835.81
Each Additional foot	\$ 36.09



Assembled Pricing Includes: white track cut to size, masters, carriers, end caps pulleys, belt connector, motor "I-45", RF remote, and power supply. Freight not included.	<b>First 48"</b>	\$2,835.81	<b>144"</b>	\$3,124.56
	<b>60"</b>	\$2,871.91	<b>156"</b>	\$3,160.66
	<b>72"</b>	\$2,908.00	<b>168"</b>	\$3,196.75
	<b>84"</b>	\$2,944.10	<b>180"</b>	\$3,232.85
	<b>96"</b>	\$2,980.19	<b>192"</b>	\$3,268.94
	<b>108"</b>	\$3,016.28	<b>204"</b>	\$3,305.03
	<b>120"</b>	\$3,052.38	<b>216"</b>	\$3,341.13
	<b>132"</b>	\$3,088.47	<b>228"</b>	\$3,377.22

Add 10% for color other than white.

## M6DX SERIES *page 24*



M6TR	\$	7.00	ft
M6BK	\$	7.69	ft

### Assembled "D1" Class Motor

First 48"	\$	1,992.38
Each Additional foot	\$	36.09

Assembled Pricing Includes: white track cut to size, masters, carriers, end caps pulleys, belt connector, motor "D1", RF remote, and power supply. Freight not included.	<b>First 48"</b>	\$1,992.38	<b>144"</b>	\$2,281.13
	<b>60"</b>	\$2,028.47	<b>156"</b>	\$2,317.22
	<b>72"</b>	\$2,064.56	<b>168"</b>	\$2,353.31
	<b>84"</b>	\$2,100.66	<b>180"</b>	\$2,389.41
	<b>96"</b>	\$2,136.75	<b>192"</b>	\$2,425.50
	<b>108"</b>	\$2,172.84	<b>204"</b>	\$2,461.59
	<b>120"</b>	\$2,208.94	<b>216"</b>	\$2,497.69
	<b>132"</b>	\$2,245.03	<b>228"</b>	\$2,533.78

### Assembled "D3-W" Class Motor

First 48"	\$	2,241.57
Each Additional foot	\$	36.09

Assembled Pricing Includes: white track cut to size, masters, carriers, end caps pulleys, belt connector, motor "D3-W", RF remote, and power supply. Freight not included.	<b>First 48"</b>	\$2,241.57	<b>144"</b>	\$2,530.32
	<b>60"</b>	\$2,277.66	<b>156"</b>	\$2,566.41
	<b>72"</b>	\$2,313.75	<b>168"</b>	\$2,602.50
	<b>84"</b>	\$2,349.85	<b>180"</b>	\$2,638.60
	<b>96"</b>	\$2,385.94	<b>192"</b>	\$2,674.69
	<b>108"</b>	\$2,422.04	<b>204"</b>	\$2,710.79
	<b>120"</b>	\$2,458.13	<b>216"</b>	\$2,746.88
	<b>132"</b>	\$2,494.22	<b>228"</b>	\$2,782.97

Add 10% for color other than white.

VRF01-WH	RF 1 Channel Remote	\$ 225.40	ea
VRF15-WH	RF 15 Channel Remote	\$ 279.50	ea
VRF02-WH	Single-Channel Dual Control	\$ 240.25	ea
VRF03-WH	15-Channel LCD Emitter	\$ 279.50	ea
BEXPRO-WH	Smart IP Bridge for Automation	\$ 404.25	ea

## R1 SERIES

page 26



R1TR19	White Track 19'	\$ 8.78	ft
--------	-----------------	---------	----

### Assembled

First 36"	\$ 189.90
Each Additional Inch	\$ 4.50

Assembled Pricing Includes: white track cut to size, cord roll supports, smart pull control unit, decorative smart pull handle, brackets, and counterweight. Freight not included.	<b>First 36"</b>	\$ 189.90	<b>132"</b>	\$ 621.90
	<b>48"</b>	\$ 243.90	<b>144"</b>	\$ 675.90
	<b>60"</b>	\$ 297.90	<b>156"</b>	\$ 729.90
	<b>72"</b>	\$ 351.90	<b>168"</b>	\$ 783.90
	<b>84"</b>	\$ 405.90	<b>180"</b>	\$ 837.90
	<b>96"</b>	\$ 459.90	<b>192"</b>	\$ 891.90
	<b>108"</b>	\$ 513.90	<b>204"</b>	\$ 945.90
	<b>120"</b>	\$ 567.90	<b>216"</b>	\$ 999.90

### Components

R1COR-WH	Cord Roll Support with Twist Lock (no screws needed)	\$ 10.40	ea
R1ROD16-AL	Aluminum Rod 16'	\$ 4.40	ft
ACW19-AL	Counterweight 19'	\$ 2.48	ft
ACW12-WH	2" Counterweight White (12')	\$ 10.90	ft
R1CON01-WH	Smart Pull Right Control Unit w/End Cap	\$ 55.70	ea
R1CON02-WH	Smart Pull Left Control Unit w/End Cap	\$ 55.70	ea
R1BRK-WH	Smart Pull Break	\$ 49.10	ea
R1STP-WH	Smart Pull Stop	\$ 37.80	ea
R3SWB-WH	Swivel Wall Bracket	\$ 2.29	ea
R3KWB-WH	Klick Wall Bracket	\$ 2.60	ea
R3KCB-WH	Klick Ceiling Bracket	\$ 2.60	ea
R3SCB-WH	Swivel Ceiling Bracket	\$ 2.60	ea
R3VBR-WH	Valance Bracket	\$ 2.99	ea
PVE13-WH	Velcro Profile w/Tape	\$ 4.72	ft

R3VCO-WH	Valance Corner	\$ 4.33	ea
TVE27-WH	Velcro Tape	\$ 33.54	roll
SPN19-WH	Fiberglass Spine 19'	\$ 0.53	ft
SRI14-WH	Plastic Snap Ring	\$ 0.12	ea
RRI13-CL	Plastic Ring Cord Guide	\$ 0.12	ea
SHR73-WH	Shroud	\$ 348.51	roll
R1HDL-XX	Decorative Smart Pull Handle	\$ 19.20	ea
Available Colors:	WH, CH, BK, SS, SN, BZ, BG		

## R2 SERIES

page 28



R2TR19	White Track 19'	\$ 8.78	ft
--------	-----------------	---------	----

### Assembled

First 36"	\$ 212.75
Each Additional Inch	\$ 3.18

Assembled Pricing Includes: white track cut to size, cord roll supports, crank system control unit, crank rod pole, brackets, and counterweight. Freight not included.	<b>First 36"</b>	\$ 212.75	<b>132"</b>	\$ 518.03
	<b>48"</b>	\$ 250.91	<b>144"</b>	\$ 556.19
	<b>60"</b>	\$ 289.07	<b>156"</b>	\$ 594.35
	<b>72"</b>	\$ 327.23	<b>168"</b>	\$ 632.51
	<b>84"</b>	\$ 365.39	<b>180"</b>	\$ 670.67
	<b>96"</b>	\$ 403.55	<b>192"</b>	\$ 708.83
	<b>108"</b>	\$ 441.71	<b>204"</b>	\$ 746.99
	<b>120"</b>	\$ 479.87	<b>216"</b>	\$ 785.15

### Components

R2COR-WH	Cord Roll Support with EZ Lock (no screws needed)	\$ 7.80	ea
R2ROD16-AL	Aluminum Rod 16'	\$ 2.68	ft
R2CON11-WH	1:1 Crank System Control Unit w/End Cap	\$ 49.50	ea
R2CON14-WH	1:4 Crank System Control Unit w/End Cap	\$ 49.50	ea
R2CKR-WH	Crank Rod Pole	\$ 92.90	ea
R3SWB-WH	Swivel Wall Bracket	\$ 2.29	ea
R3SCB-WH	Swivel Ceiling Bracket	\$ 2.60	ea
R3KWB-WH	Klick Wall Bracket	\$ 2.60	ea
R3KCB-WH	Klick Ceiling Bracket	\$ 2.60	ea
R3VBR-WH	Valance Bracket	\$ 2.99	ea
PVE13-WH	Velcro Profile w/Tape	\$ 4.72	ft
SPN19-WH	Fiberglass Spine 19'	\$ 0.53	ft
R3VCO-WH	Valance Corner	\$ 4.33	ea
TVE27-WH	Velcro Tape	\$ 33.54	roll
SRI14-WH	Plastic Snap Ring	\$ 0.12	ea
RRI13-CL	Plastic Ring Cord Guide	\$ 0.12	ea
SHR73-WH	Shroud	\$ 348.51	roll

R3LEV-CL	Shade Leveler	\$	0.57	ea
ACW19-AL	Counterweight 19'	\$	2.48	ft
ACW12-WH	2" Counterweight White (12')	\$	10.90	ft

## R3 SERIES

page 30



R3TR19	White Track 19'	\$	8.78	ft
--------	-----------------	----	------	----

### Assembled

First 36"	\$	145.53
Each Additional Inch	\$	3.18

Assembled Pricing Includes: white track cut to size, cord roll supports, control unit, plastic chain, brackets, and counterweight. Freight not included.	<b>First 36"</b>	\$ 145.53	<b>132"</b>	\$ 450.45
	<b>48"</b>	\$ 183.65	<b>144"</b>	\$ 488.57
	<b>60"</b>	\$ 221.76	<b>156"</b>	\$ 526.68
	<b>72"</b>	\$ 259.88	<b>168"</b>	\$ 564.80
	<b>84"</b>	\$ 297.99	<b>180"</b>	\$ 602.91
	<b>96"</b>	\$ 336.11	<b>192"</b>	\$ 641.03
	<b>108"</b>	\$ 374.22	<b>204"</b>	\$ 679.14
	<b>120"</b>	\$ 412.34	<b>216"</b>	\$ 717.26

### Components

R3COR-WH	Cord Roll Support with EZ Lock	\$	7.80	ea
R3ROD16-AL	Aluminum Rod 16'	\$	2.68	ft
R3CON11-WH	Control Unit w/End Cap Ratio 1:1	\$	16.90	ea
R3CON12-WH	Control Unit w/End Cap Ratio 1:2	\$	16.90	ea
R3CON14-WH	Control Unit w/End Cap Ratio 1:4	\$	16.90	ea
R3PEC29-WH	Plastic Endless Chain 29"	\$	2.70	ea
R3PEC39-WH	Plastic Endless Chain 39"	\$	3.13	ea
R3PEC49-WH	Plastic Endless Chain 49"	\$	3.87	ea
R3PEC59-WH	Plastic Endless Chain 59"	\$	4.30	ea
R3PEC69-WH	Plastic Endless Chain 69"	\$	4.52	ea
R3PEC79-WH	Plastic Endless Chain 79"	\$	4.67	ea
R3PEC89-WH	Plastic Endless Chain 89"	\$	4.82	ea
R3PEC99-WH	Plastic Endless Chain 99"	\$	5.22	ea
R3SWB-WH	Swivel Wall Bracket	\$	2.29	ea
R3SCB-WH	Swivel Ceiling Bracket	\$	2.60	ea
R3KWB-WH	Klick Wall Bracket	\$	2.60	ea
R3KCB-WH	Klick Ceiling Bracket	\$	2.60	ea
PVE13-WH	Velcro Profile w/Tape	\$	4.72	ft
R3VBR-WH	Valance Bracket	\$	2.99	ea
R3VCO-WH	Valance Corner	\$	4.33	ea
TVE27-WH	Velcro Tape	\$	33.54	roll
SPN19-WH	Fiberglass Spine 19'	\$	0.53	ft
SRI14-WH	Plastic Snap Ring	\$	0.12	ea
RR113-CL	Plastic Ring Cord Guide	\$	0.12	ea

SHR73-WH	Shroud	\$ 348.51	roll
CTEN07-WH	EZ Clip Tension Device	\$ 6.06	ea
CTEN05-CL	Tension Device	\$ 8.42	ea
R3LEV-CL	Shade Laveler	\$ 0.57	ea
ACW19-AL	Counterweight 19'	\$ 2.48	ft
ACW12-WH	2" Counterweight White (12')	\$ 10.90	ft

## R5 SERIES

page 32



### Assembled for Somfy "TL25" Class Motor

First 36"	\$ 1,147.49
Each Additional Inch	\$ 3.47

Assembled Pricing Includes: white track cut to size, cord roll supports, motor TL25, brackets, counterweight, RF remote, and power supply . Freight not included.	<b>First 36"</b>	\$ 1,147.49	<b>132"</b>	\$ 1,480.13
	<b>48"</b>	\$ 1,189.07	<b>144"</b>	\$ 1,521.71
	<b>60"</b>	\$ 1,230.65	<b>156"</b>	\$ 1,563.29
	<b>72"</b>	\$ 1,272.23	<b>168"</b>	\$ 1,604.87
	<b>84"</b>	\$ 1,313.81	<b>180"</b>	\$ 1,646.45
	<b>96"</b>	\$ 1,355.39	<b>192"</b>	\$ 1,688.03
	<b>108"</b>	\$ 1,396.97	<b>204"</b>	\$ 1,729.61
	<b>120"</b>	\$ 1,438.55	<b>216"</b>	\$ 1,771.19

### Assembled for Lithium Battery Motor

First 36"	\$ 941.90
Each Additional Inch	\$ 3.47

Assembled Pricing Includes: white track cut to size, cord roll supports, motor V5 lithium battery, brackets, counterweight, RF remote, and power supply . Freight not included.	<b>First 36"</b>	\$ 941.90	<b>132"</b>	\$ 1,274.54
	<b>48"</b>	\$ 983.48	<b>144"</b>	\$ 1,316.12
	<b>60"</b>	\$ 1,025.06	<b>156"</b>	\$ 1,357.70
	<b>72"</b>	\$ 1,066.64	<b>168"</b>	\$ 1,399.28
	<b>84"</b>	\$ 1,108.22	<b>180"</b>	\$ 1,440.86
	<b>96"</b>	\$ 1,149.80	<b>192"</b>	\$ 1,482.44
	<b>108"</b>	\$ 1,191.38	<b>204"</b>	\$ 1,524.02
	<b>120"</b>	\$ 1,232.96	<b>216"</b>	\$ 1,565.60

## R6 SERIES

page 34



R6TR19-WH	White Track 19'	\$ 13.28	ft
-----------	-----------------	----------	----

### Assembled

First 36"	\$ 184.22
Each Additional Inch	\$ 3.87

Assembled Pricing Includes: white track cut to size, cord roll supports, control unit, plastic chain, brackets, and counterweight. Freight not included.	<b>First 36"</b>	\$ 184.22	<b>132"</b>	\$ 555.67
	<b>48"</b>	\$ 230.65	<b>144"</b>	\$ 602.10
	<b>60"</b>	\$ 277.08	<b>156"</b>	\$ 648.53
	<b>72"</b>	\$ 323.52	<b>168"</b>	\$ 694.96
	<b>84"</b>	\$ 369.95	<b>180"</b>	\$ 741.39
	<b>96"</b>	\$ 416.38	<b>192"</b>	\$ 787.83
	<b>108"</b>	\$ 462.81	<b>204"</b>	\$ 834.26
	<b>120"</b>	\$ 509.24	<b>216"</b>	\$ 880.69

### Components

R6COR-WH	Cord Roll Support with EZ Lock	\$ 8.13	ea
R6ROD16-AL	Aluminum Rod 16'	\$ 2.68	ft
ACW19-AL	Counterweight 19'	\$ 2.48	ft
R6CON14-WH	Control Unit w/End Cap Ratio 1:4	\$ 23.25	ea
R6PEC29-WH	Plastic Endless Chain 29"	\$ 2.70	ea
R6PEC39-WH	Plastic Endless Chain 39"	\$ 3.13	ea
R6PEC49-WH	Plastic Endless Chain 49"	\$ 3.87	ea
R6PEC59-WH	Plastic Endless Chain 59"	\$ 4.30	ea
R6PEC69-WH	Plastic Endless Chain 69"	\$ 4.52	ea
R6PEC79-WH	Plastic Endless Chain 79"	\$ 4.67	ea
R6PEC89-WH	Plastic Endless Chain 89"	\$ 4.82	ea
R6PEC99-WH	Plastic Endless Chain 99"	\$ 5.22	ea
R6KCB-WH	Klick Ceiling Bracket	\$ 3.71	ea
R6KWB-WH	Klick Wall Bracket	\$ 9.67	ea
TVE27-WH	Velcro Tape	\$ 33.54	roll
SPN19-WH	Fiberglass Spine 19'	\$ 0.53	ft
R6LEV-CL	Shade Laveler	\$ 0.57	ea
SRI14-WH	Plastic Snap Ring	\$ 0.12	ea
RR113-CL	Plastic Ring Cord Guide	\$ 0.12	ea
SHR73-WH	Shroud	\$ 348.51	roll
CTEN07-WH	EZ Clip Tension Device	\$ 6.06	ea
CTEN05-CL	Tension Device	\$ 8.42	ea

## R7 SERIES

page 36



R7TR19-WH	White Track 19'	\$ 15.21	ft
-----------	-----------------	----------	----

### Assembled Motorized

First 36"	\$ 1,453.86
Each Additional foot	\$ 103.66

Assembled Pricing Includes: white track cut to size, cord roll supports, motor Ultra 30 Wire-Free, brackets, counterweight, RF remote, and power supply . Freight not included.	<b>First 36"</b>	\$1,453.86	<b>132"</b>	\$2,283.15
	<b>48"</b>	\$1,557.52	<b>144"</b>	\$2,386.81
	<b>60"</b>	\$1,661.18	<b>156"</b>	\$2,490.47
	<b>72"</b>	\$1,764.84	<b>168"</b>	\$2,594.13
	<b>84"</b>	\$1,868.50	<b>180"</b>	\$2,697.79
	<b>96"</b>	\$1,972.16	<b>192"</b>	\$2,801.45
	<b>108"</b>	\$2,075.82	<b>204"</b>	\$2,905.11
	<b>120"</b>	\$2,179.49	<b>216"</b>	\$3,008.78

### Components

R7TUB	8-Angle Tube 19'	\$ 6.39	ft
R7END-WH	Left & Right End Caps	\$ 6.23	ea
R7BRA-WH	Wall/Ceiling Bracket	\$ 18.26	ea
R7CST-WH	Center Support	\$ 18.15	ea
R7COR-WH	Cord Roll House & Drum	\$ 62.13	ea
SPN19-WH	Fiberglass Spine 19'	\$ 0.53	ft
R3LEV-CL	Shade Leveler	\$ 0.57	ea
ACW19-WH	Countweight 19'	\$ 2.48	ft
SHR73-WH	Shroud	\$ 348.51	roll
RCS04-WH	RTS Multi Remote Control 4 Channels*	\$ 292.93	ea
RCS01-WH	RTS Remote Control 1 Channel	\$ 292.93	ea
RCS05-WH	RTS Situo Remote Control 5 Channels	\$ 357.50	ea
BEXPRO-WH	Smart IP Bridge For Automation	\$ 404.25	ea

## PS SERIES

page 38



PS2TR19-WH	2 Channel Track 19'	\$ 7.60	ft
PS3TR19-WH	3 Channel Track 19'	\$ 7.60	ft
PS4TR19-WH	4 Channel Track 19'	\$ 7.60	ft
PS5TR19-WH	5 Channel Track 19'	\$ 7.60	ft

### Assembled 2 Channel

First 48"	\$ 215.99
Each Additional foot	\$ 33.50

Assembled Pricing Includes: white track cut to size, velcro profile, carriers, angles, end caps, brackets, counterweight, and 36" fiberglass batons. Freight not included.	<b>First 48"</b>	\$ 215.99	<b>144"</b>	\$ 483.95
	<b>60"</b>	\$ 249.48	<b>156"</b>	\$ 517.44
	<b>72"</b>	\$ 282.98	<b>168"</b>	\$ 550.94
	<b>84"</b>	\$ 316.47	<b>180"</b>	\$ 584.43
	<b>96"</b>	\$ 349.97	<b>192"</b>	\$ 617.93
	<b>108"</b>	\$ 383.46	<b>204"</b>	\$ 651.42
	<b>120"</b>	\$ 416.96	<b>216"</b>	\$ 684.92
	<b>132"</b>	\$ 450.45	<b>228"</b>	\$ 718.41

### Assembled 3 Channel

First 48"	\$ 244.86
-----------	-----------

Each Additional foot

\$ 40.14

Assembled Pricing Includes: white track cut to size, velcro profile, carriers, angles, end caps, brackets, counterweight, and 36" fiberglass batons. Freight not included.	<b>First 48"</b>	\$ 244.86	<b>144"</b>	\$ 565.95
	<b>60"</b>	\$ 285.00	<b>156"</b>	\$ 606.09
	<b>72"</b>	\$ 325.13	<b>168"</b>	\$ 646.22
	<b>84"</b>	\$ 365.27	<b>180"</b>	\$ 686.36
	<b>96"</b>	\$ 405.41	<b>192"</b>	\$ 726.50
	<b>108"</b>	\$ 445.54	<b>204"</b>	\$ 766.63
	<b>120"</b>	\$ 485.68	<b>216"</b>	\$ 806.77
	<b>132"</b>	\$ 525.81	<b>228"</b>	\$ 846.90

**Assembled 4 Channel**

First 48"	\$ 287.60
Each Additional foot	\$ 47.93

Assembled Pricing Includes: white track cut to size, velcro profile, carriers, angles, end caps, brackets, counterweight, and 36" fiberglass batons. Freight not included.	<b>First 48"</b>	\$ 287.60	<b>144"</b>	\$ 671.06
	<b>60"</b>	\$ 335.53	<b>156"</b>	\$ 718.99
	<b>72"</b>	\$ 383.46	<b>168"</b>	\$ 766.92
	<b>84"</b>	\$ 431.39	<b>180"</b>	\$ 814.85
	<b>96"</b>	\$ 479.33	<b>192"</b>	\$ 862.79
	<b>108"</b>	\$ 527.26	<b>204"</b>	\$ 910.72
	<b>120"</b>	\$ 575.19	<b>216"</b>	\$ 958.65
	<b>132"</b>	\$ 623.12	<b>228"</b>	\$1,006.58

**Assembled 5 Channel**

First 48"	\$ 336.11
Each Additional foot	\$ 54.86

Assembled Pricing Includes: white track cut to size, velcro profile, carriers, angles, end caps, brackets, counterweight, and 36" fiberglass batons. Freight not included.	<b>First 48"</b>	\$ 336.11	<b>144"</b>	\$ 775.01
	<b>60"</b>	\$ 390.97	<b>156"</b>	\$ 829.87
	<b>72"</b>	\$ 445.83	<b>168"</b>	\$ 884.73
	<b>84"</b>	\$ 500.69	<b>180"</b>	\$ 939.59
	<b>96"</b>	\$ 555.56	<b>192"</b>	\$ 994.46
	<b>108"</b>	\$ 610.42	<b>204"</b>	\$1,049.32
	<b>120"</b>	\$ 665.28	<b>216"</b>	\$1,104.18
	<b>132"</b>	\$ 720.14	<b>228"</b>	\$1,159.04

**Components**

PSE310-WH	2 Channel End Cap	\$ 1.06	ea
PSE311-WH	3, 4, & 5-Channel End Cap	\$ 1.70	ea
PSE312-WH	2 Channel End Cap Cover	\$ 0.61	ea
PSE309-WH	3, 4, & 5-Channel End Cap Cover	\$ 1.09	ea
PSC007-WH	Wheeled Carrier	\$ 1.41	ea
PSS202-WH	Catcher T-Angle	\$ 0.61	ea
PSS203-WH	Stopper A-Angle	\$ 0.61	ea
PSS204-WH	L End Stop	\$ 0.61	ea
PSS209-WH	Reverse L Stop	\$ 0.61	ea
PSB510-WH	Baton Adaptor	\$ 1.29	ea



PSB003-SL	Swivel Ceiling Brackets for 2,3 & 4 Channel	\$	1.09	ea
PSB002-WH	Klick On Ceiling Bracket 2,3 & 4 Channel	\$	1.37	ea
PSB005-WH	Klick On Ceiling Bracket 5 Channel	\$	2.07	ea
PSB004-WH	Wall Bracket for 2,3 & 4 Channel	\$	3.30	ea
PSB006-WH	Wall Bracket for 5 Channel	\$	4.04	ea
PSV90-WH	Valance Bracket	\$	3.01	ea
PSV91-WH	Valance Corner	\$	4.33	ea
PVE13-WH	Profile w/Hook Tape	\$	4.72	ft
ACW19-AL	Counterweight Bar 19'	\$	2.48	ft
PSS308-SL	Stationary Set Screw	\$	0.53	ea
TVE27-WH	Velcro Tape	\$	33.54	roll

## DECORATIVE RAILS

### URBAN COLLECTION

page 42



URB828	Rail 20'	\$	15.85	ft
--------	----------	----	-------	----

Available Finishes: WH, CH, BK, SS, SN, BZ, BG

#### Assembled

First 48"	\$	378.84
Each Additional Foot	\$	43.89

Assembled Pricing Includes: H-Rail cut to size, carriers, master carriers, end cap finials, single brackets, and 36" fiberglass batons. Freight not included.	<b>First 48"</b>	\$	378.84	<b>144"</b>	\$	729.96
	<b>60"</b>	\$	422.73	<b>156"</b>	\$	773.85
	<b>72"</b>	\$	466.62	<b>168"</b>	\$	817.74
	<b>84"</b>	\$	510.51	<b>180"</b>	\$	861.63
	<b>96"</b>	\$	554.40	<b>192"</b>	\$	905.52
	<b>108"</b>	\$	598.29	<b>204"</b>	\$	949.41
	<b>120"</b>	\$	642.18	<b>216"</b>	\$	993.30
	<b>132"</b>	\$	686.07	<b>228"</b>	\$	1,037.19

#### Assembled Double

First 48"	\$	652.58
Each Additional Foot	\$	75.08

Assembled Pricing Includes: H-Rail cut to size, carriers, master carriers, end cap finials, double brackets, and 36" fiberglass batons. Freight not included.	<b>First 48"</b>	\$	652.58	<b>144"</b>	\$	1,253.18
	<b>60"</b>	\$	727.65	<b>156"</b>	\$	1,328.25
	<b>72"</b>	\$	802.73	<b>168"</b>	\$	1,403.33
	<b>84"</b>	\$	877.80	<b>180"</b>	\$	1,478.40
	<b>96"</b>	\$	952.88	<b>192"</b>	\$	1,553.48
	<b>108"</b>	\$	1,027.95	<b>204"</b>	\$	1,628.55
	<b>120"</b>	\$	1,103.03	<b>216"</b>	\$	1,703.63
	<b>132"</b>	\$	1,178.10	<b>228"</b>	\$	1,778.70

## Components

URB121	End Cap Finial	\$ 19.95	ea
URB122	Lazio Ball Finial	\$ 49.38	ea
URB123	Westin Finial	\$ 49.38	ea
URB124	Zeus Finial	\$ 54.33	ea
URB125	Aspen Finial	\$ 54.33	ea
URB126	Naxos Finial	\$ 56.98	ea
URB128	Dixon Finial	\$ 63.70	ea
URB129	Moxy Finial	\$ 69.10	ea
URB130	Huff Finial	\$ 59.90	ea
URB131	Cielo Finial	\$ 63.40	ea
URB132	Hera Finial	\$ 63.40	ea
URB225	Flush Ceiling Bracket	\$ 20.50	ea
URB226	Inside Mount Bracket	\$ 32.03	ea
URB221	Single Wall Bracket	\$ 38.38	ea
URB222	Extended Wall Bracket	\$ 43.73	ea
URB224	Pinch Pleat Double Wall Bracket	\$ 47.03	ea
URB223	Ripplefold Double Wall Bracket	\$ 52.95	ea
URB227	Ceiling Bracket	\$ 34.25	ea
URB410	Swivel Elbow	\$ 62.54	ea
URB601	Rail Splice Connector	\$ 15.65	ea
URB605	Extra Long HD Splice	\$ 23.45	ea

## AMSTERDAM COLLECTION

page 44



AMS828	Rail 19'	\$ 19.33	ft
--------	----------	----------	----

Available Finishes: WH, SN, GT, SB, BK, AB, TA

### Assembled

First 48"	\$ 632.65
Each Additional Foot	\$ 76.52

Assembled Pricing Includes: H-Rail cut to size, carriers, master carriers, end cap finials, single brackets, and 36" fiberglass batons. Freight not included.	<b>First 48"</b>	\$ 632.65	<b>144"</b>	\$1,244.80
	<b>60"</b>	\$ 709.17	<b>156"</b>	\$1,321.32
	<b>72"</b>	\$ 785.69	<b>168"</b>	\$1,397.84
	<b>84"</b>	\$ 862.21	<b>180"</b>	\$1,474.36
	<b>96"</b>	\$ 938.73	<b>192"</b>	\$1,550.88
	<b>108"</b>	\$1,015.25	<b>204"</b>	\$1,627.40
	<b>120"</b>	\$1,091.76	<b>216"</b>	\$1,703.91
	<b>132"</b>	\$1,168.28	<b>228"</b>	\$1,780.43

## Components

AMS121	End Cap Finial	\$ 48.44	ea
AMS124	Ball Finial	\$ 101.52	ea
AMS125	Notched Finial	\$ 55.91	ea

AMS221	Single Wall Bracket	\$ 69.98	ea
AMS222	Extended Wall Bracket	\$ 92.16	ea
AMS223	Double Wall Bracket	\$ 148.12	ea
AMS226	Inside Mount Bracket	\$ 110.68	ea
AMS225	Flush Ceiling Bracket	\$ 25.54	ea
AMS227	Ceiling Bracket	\$ 69.55	ea
AMS502	Bracket Extension	\$ 90.94	ea
RMAS301-WH	Ripplefold Master w/Snap and Adaptor Over R	\$ 8.78	ea
RMAS302-WH	Ripplefold Master w/Snap and Adaptor Under L	\$ 8.78	ea
PMAS101-WH	Pinch Pleat Master Multifunctional Over R	\$ 6.94	ea
PMAS102-WH	Pinch Pleat Master Multifunctional Under L	\$ 6.94	ea
BMAS209-WH	Butt Master w/3 Snaps Left	\$ 17.29	ea
BMAS210-WH	Butt Master w/3 Snaps Right	\$ 17.29	ea
BMAS401-WH	Wheeled Butt Master Right	\$ 26.28	ea
BMAS402-WH	Wheeled Butt Master Left	\$ 26.28	ea
RCARS60-WH	2 piece connected snap 60%	\$ 1.18	ea
RCARS80-WH	2 piece connected snap 80%	\$ 1.18	ea
RCARS100-WH	2 piece connected snap 100%	\$ 1.18	ea
RCARS120-WH	2 piece connected snap 120%	\$ 1.18	ea
RCARB60-WH	B/B connected snap 60%	\$ 1.91	ea
RCARB80-WH	B/B connected snap 80%	\$ 1.91	ea
RCARB100-WH	B/B connected snap 100%	\$ 1.91	ea
RCARB120-WH	B/B connected snap 120%	\$ 1.91	ea
BCAR02-WH	Slim Ball Bearing Carrier	\$ 0.67	ea
END307	End Lock	\$ 0.94	ea
AMS601	Rail Connector	\$ 23.94	ea

## BARCELONA COLLECTION

page 46



BAR828	Rail 19'	\$ 35.59	ft
--------	----------	----------	----

Available Finishes: WL, CH, OA

### Assembled

First 48"	\$ 756.53
Each Additional Foot	\$ 109.44

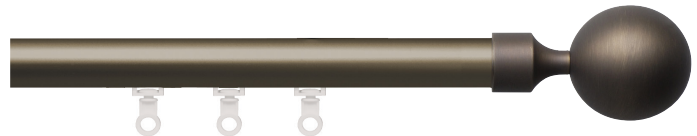
Assembled Pricing Includes: H-Rail cut to size, carriers, master carriers, end cap finials, single brackets, and 36" fiberglass batons. Freight not included.	<b>First 48"</b>	\$ 756.53	<b>144"</b>	\$1,632.02
	<b>60"</b>	\$ 865.96	<b>156"</b>	\$1,741.45
	<b>72"</b>	\$ 975.40	<b>168"</b>	\$1,850.89
	<b>84"</b>	\$1,084.83	<b>180"</b>	\$1,960.32
	<b>96"</b>	\$1,194.27	<b>192"</b>	\$2,069.76
	<b>108"</b>	\$1,303.71	<b>204"</b>	\$2,179.20
	<b>120"</b>	\$1,413.14	<b>216"</b>	\$2,288.63
	<b>132"</b>	\$1,522.58	<b>228"</b>	\$2,398.07

## Components

BAR124	Sphere Finial	\$ 114.08	ea
BAR123	End Cap Finial	\$ 35.08	ea
BAR221	Single Wall Bracket	\$ 69.98	ea
BAR222	Extended Wall Bracket	\$ 92.16	ea
BAR223	Double Wall Bracket	\$ 148.12	ea
BAR225	Flush Ceiling Bracket	\$ 25.54	ea
RMAS301-WH	Ripplefold Master w/Snap and Adaptor Over R	\$ 8.78	ea
RMAS302-WH	Ripplefold Master w/Snap and Adaptor Under L	\$ 8.78	ea
PMAS101-WH	Pinch Pleat Master Multifunctional Over R	\$ 6.94	ea
PMAS102-WH	Pinch Pleat Master Multifunctional Under L	\$ 6.94	ea
BMAS209-WH	Butt Master w/3 Snaps Left	\$ 17.29	ea
BMAS210-WH	Butt Master w/3 Snaps Right	\$ 17.29	ea
BMAS401-WH	Wheeled Butt Master Right	\$ 26.28	ea
BMAS402-WH	Wheeled Butt Master Left	\$ 26.28	ea
RCARS60-WH	2 piece connected snap 60%	\$ 1.18	ea
RCARS80-WH	2 piece connected snap 80%	\$ 1.18	ea
RCARS100-WH	2 piece connected snap 100%	\$ 1.18	ea
RCARS120-WH	2 piece connected snap 120%	\$ 1.18	ea
RCARB60-WH	B/B connected snap 60%	\$ 1.91	ea
RCARB80-WH	B/B connected snap 80%	\$ 1.91	ea
RCARB100-WH	B/B connected snap 100%	\$ 1.91	ea
RCARB120-WH	B/B connected snap 120%	\$ 1.91	ea
BCAR02-WH	Slim Ball Bearing Carrier	\$ 0.67	ea
END307	End Lock	\$ 0.94	ea
BAR601	Rail Connector	\$ 15.65	ea
URB605	Extra Long HD Splice	\$ 23.45	ea

## MUNICH COLLECTION

page 48



MUN828	Rail 19' PC, SB, BZ, BK, BN, SG	\$ 34.53	ft
<i>Special Finishes</i>	<i>BE, OA, WL</i>	\$ 41.44	ft

### Assembled

First 48"	\$ 784.82
Each Additional Foot	\$ 117.23

Assembled Pricing Includes: H-Rail cut to size, carriers, master carriers, end cap finials, single brackets, and 36" fiberglass batons. Freight not included.	<b>First 48"</b>	\$ 784.82	<b>144"</b>	\$1,722.68
	<b>60"</b>	\$ 902.06	<b>156"</b>	\$1,839.92
	<b>72"</b>	\$1,019.29	<b>168"</b>	\$1,957.15
	<b>84"</b>	\$1,136.52	<b>180"</b>	\$2,074.38
	<b>96"</b>	\$1,253.75	<b>192"</b>	\$2,191.61
	<b>108"</b>	\$1,370.99	<b>204"</b>	\$2,308.85
	<b>120"</b>	\$1,488.22	<b>216"</b>	\$2,426.08
	<b>132"</b>	\$1,605.45	<b>228"</b>	\$2,543.31

## Components

MUN121	End Cap Finial	\$ 56.60	ea
ALE137	Alea Finial	\$ 80.32	ea
MUN221	Single Wall Bracket	\$ 177.87	ea
MUN223	Double Wall Bracket	\$ 214.25	ea
MUN244	Ceiling Bracket	\$ 68.72	ea
MUN225	Flush Ceiling Bracket	\$ 25.54	ea
MUN227	Ceiling Bracket 2"	\$ 129.35	ea
MUN228	French Return Wall Bracket	\$ 206.20	ea
END306-WH	End Stop	\$ 0.89	ea
MUN410	Swivel Elbow	\$ 215.35	ea
MUN601	Rail Connector	\$ 23.94	ea

## Other Finials

ALA124	Alassio Finial	\$ 323.37	ea
NAP126	Napoli Finial	\$ 401.63	ea
VER127	Verona Finial	\$ 438.11	ea
ISC125	Iscia Finial	\$ 277.52	ea
RIV122	Riva Finial	\$ 266.78	ea
PES123	Pescara Finial	\$ 319.36	ea
ROM129	Roma Finial	\$ 566.61	ea
TER133	Terra Finial	\$ 136.87	ea
TAH134	Tahoe Finial	\$ 174.86	ea
ZEN135	Zena Finial	\$ 170.27	ea
EDI136	Edil Finial	\$ 178.46	ea
ARD131	Ardea Finial	\$ 540.19	ea
ASO132	Socket for Ardea Finial	\$ 108.62	ea

## LYON COLLECTION

page 50



LYO828	Rail 19'7"	\$ 58.22	ft
--------	------------	----------	----

Available Finishes: PC, BN, BG, BK, SG, AB

## Assembled

First 48"	\$ 1,041.23
Each Additional Foot	\$ 129.07

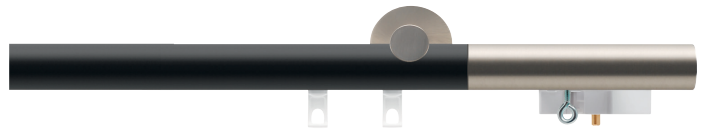
Assembled Pricing Includes: H-Rail cut to size, carriers, master carriers, decorative end cap pulleys, single brackets, cord and tension pulley. Freight not included.	<b>First 48"</b>	\$ 1,041.23	<b>144"</b>	\$ 2,073.80
	<b>60"</b>	\$ 1,170.30	<b>156"</b>	\$ 2,202.87
	<b>72"</b>	\$ 1,299.38	<b>168"</b>	\$ 2,331.95
	<b>84"</b>	\$ 1,428.45	<b>180"</b>	\$ 2,461.02
	<b>96"</b>	\$ 1,557.52	<b>192"</b>	\$ 2,590.09
	<b>108"</b>	\$ 1,686.59	<b>204"</b>	\$ 2,719.16
	<b>120"</b>	\$ 1,815.66	<b>216"</b>	\$ 2,848.23
	<b>132"</b>	\$ 1,944.73	<b>228"</b>	\$ 2,977.30

## Components

END121	Decorative Cord Pulley	\$ 109.16	ea
ALA124	Alassio Finial	\$ 323.37	ea
NAP126	Napoli Finial	\$ 401.63	ea
VER127	Verona Finial	\$ 438.11	ea
ISC125	Iscia Finial	\$ 277.52	ea
RIV122	Riva Finial	\$ 266.78	ea
PES123	Pescara Finial	\$ 319.36	ea
ROM129	Roma Finial	\$ 566.61	ea
TER133	Terra Finial	\$ 136.87	ea
TAH134	Tahoe Finial	\$ 174.86	ea
ZEN135	Zena Finial	\$ 170.27	ea
EDI136	Edil Finial	\$ 178.46	ea
ARD131	Ardea Finial	\$ 540.19	ea
ASO132	Socket for Ardea Finial	\$ 108.62	ea
LYO221	Single Wall Bracket	\$ 177.87	ea
LYO222	Extended Wall Bracket	\$ 188.91	ea
LYO223	Double Wall Bracket	\$ 214.25	ea
LYO227	Ceiling Bracket	\$ 129.35	ea
LYO225	Flush Ceiling Bracket	\$ 25.54	ea
LYO250	Bracket Support	\$ 209.20	ea

## BERLIN COLLECTION

page 52



BER828	Rail 19'7"	\$ 56.80	ft
--------	------------	----------	----

Available Finishes :PC, BN, BG, BK, SG

### Assembled "S" Class Motor

First 48"	\$3,392.52
Each Additional Foot	\$ 146.11

Assembled Pricing Includes: H-Rail cut to size, carriers, master carriers, motor pulleys, single brackets, motor "S", RF remote, and power supply. Freight not included.	<b>First 48"</b>	\$3,392.52	<b>144"</b>	\$4,561.38
	<b>60"</b>	\$3,538.63	<b>156"</b>	\$4,707.49
	<b>72"</b>	\$3,684.74	<b>168"</b>	\$4,853.60
	<b>84"</b>	\$3,830.85	<b>180"</b>	\$4,999.71
	<b>96"</b>	\$3,976.95	<b>192"</b>	\$5,145.81
	<b>108"</b>	\$4,123.06	<b>204"</b>	\$5,291.92
	<b>120"</b>	\$4,269.17	<b>216"</b>	\$5,438.03
	<b>132"</b>	\$4,415.28	<b>228"</b>	\$5,584.14

### Assembled "M" Class Motor

First 48"	\$3,652.40
Each Additional Foot	\$ 146.11

Assembled Pricing Includes: H-Rail cut to size, carriers, master carriers, motor pulleys, single brackets, motor "M", RF remote, and power supply. Freight not included.	<b>First 48"</b>	\$3,652.40	<b>144"</b>	\$4,821.26
	<b>60"</b>	\$3,798.51	<b>156"</b>	\$4,967.37
	<b>72"</b>	\$3,944.61	<b>168"</b>	\$5,113.47
	<b>84"</b>	\$4,090.72	<b>180"</b>	\$5,259.58
	<b>96"</b>	\$4,236.83	<b>192"</b>	\$5,405.69
	<b>108"</b>	\$4,382.94	<b>204"</b>	\$5,551.80
	<b>120"</b>	\$4,529.04	<b>216"</b>	\$5,697.90
	<b>132"</b>	\$4,675.15	<b>228"</b>	\$5,844.01

#### Assembled "I" Class Motor

First 48"	\$ 3,630.45
Each Additional Foot	\$ 146.11

Assembled Pricing Includes: H-Rail cut to size, carriers, master carriers, motor pulleys, single brackets, motor "I", RF remote, and power supply. Freight not included.	<b>First 48"</b>	\$3,630.45	<b>144"</b>	\$4,799.31
	<b>60"</b>	\$3,776.56	<b>156"</b>	\$4,945.42
	<b>72"</b>	\$3,922.67	<b>168"</b>	\$5,091.53
	<b>84"</b>	\$4,068.77	<b>180"</b>	\$5,237.63
	<b>96"</b>	\$4,214.88	<b>192"</b>	\$5,383.74
	<b>108"</b>	\$4,360.99	<b>204"</b>	\$5,529.85
	<b>120"</b>	\$4,507.10	<b>216"</b>	\$5,675.96
	<b>132"</b>	\$4,653.20	<b>228"</b>	\$5,822.06

#### Components

BER501	Left Motor Pulley	\$ 654.52	ea
BER502	Right Motor Pulley	\$ 654.52	ea
BER511	Left Return Pulley	\$ 297.52	ea
BER512	Right Return Pulley	\$ 297.52	ea
M6S939	Motor "S" class w/ RF Built-in Receiver	\$ 1,062.91	ea
RFC15	RF Multi Remote 15 Ch.	\$ 425.72	ea
RFW02	RF Wireless Wall Switch with 2 Channels	\$ 209.54	ea

#### Assembled Somfy Ultra 35 Motor

First 48"	\$ 4,059.83
Each Additional Foot	\$ 146.11

Assembled Pricing Includes: H-Rail cut to size, carriers, master carriers, decorative motor pulley, single brackets, motor Somfy Ultra 35, power supply, and RF remote. Freight not included.	<b>First 48"</b>	\$4,059.83	<b>144"</b>	\$5,228.69
	<b>60"</b>	\$4,205.94	<b>156"</b>	\$5,374.80
	<b>72"</b>	\$4,352.05	<b>168"</b>	\$5,520.91
	<b>84"</b>	\$4,498.15	<b>180"</b>	\$5,667.01
	<b>96"</b>	\$4,644.26	<b>192"</b>	\$5,813.12
	<b>108"</b>	\$4,790.37	<b>204"</b>	\$5,959.23
	<b>120"</b>	\$4,936.48	<b>216"</b>	\$6,105.34
	<b>132"</b>	\$5,082.58	<b>228"</b>	\$6,251.44

#### Assembled Somfy Ultra 60 Motor

First 48"	\$ 4,538.87
Each Additional Foot	\$ 146.11

Assembled Pricing Includes: H-Rail cut to size, carriers, master carriers, decorative motor pulley, single brackets, motor Somfy Ultra 60, power supply, and RF remote. Freight not included.	<b>First 48"</b>	\$4,538.87	<b>144"</b>	\$5,707.73
	<b>60"</b>	\$4,684.98	<b>156"</b>	\$5,853.84
	<b>72"</b>	\$4,831.09	<b>168"</b>	\$5,999.95
	<b>84"</b>	\$4,977.19	<b>180"</b>	\$6,146.05
	<b>96"</b>	\$5,123.30	<b>192"</b>	\$6,292.16
	<b>108"</b>	\$5,269.41	<b>204"</b>	\$6,438.27
	<b>120"</b>	\$5,415.52	<b>216"</b>	\$6,584.38
	<b>132"</b>	\$5,561.62	<b>228"</b>	\$6,730.48

### Assembled Somfy Class Motor I-45

First 48"	\$ 4,440.40
Each Additional Foot	\$ 146.11

Assembled Pricing Includes: H-Rail cut to size, carriers, master carriers, decorative motor pulley, single brackets, motor Somfy I-45, power supply, and RF remote. Freight not included.	<b>First 48"</b>	\$4,440.40	<b>144"</b>	\$5,609.26
	<b>60"</b>	\$4,586.51	<b>156"</b>	\$5,755.37
	<b>72"</b>	\$4,732.61	<b>168"</b>	\$5,901.47
	<b>84"</b>	\$4,878.72	<b>180"</b>	\$6,047.58
	<b>96"</b>	\$5,024.83	<b>192"</b>	\$6,193.69
	<b>108"</b>	\$5,170.94	<b>204"</b>	\$6,339.80
	<b>120"</b>	\$5,317.04	<b>216"</b>	\$6,485.90
	<b>132"</b>	\$5,463.15	<b>228"</b>	\$6,632.01

### Components

BER505	Left Motor Pulley	\$ 732.17	ea
BER506	Right Motor Pulley	\$ 732.17	ea
BER511	Left Return Pulley	\$ 303.19	ea
BER512	Right Return Pulley	\$ 303.19	ea
SOM149	Somfy Irismo 45 Wire-free Motor	\$ 1,982.86	ea
RCS04-WH	RTS Multi Remote 4 Ch.	\$ 292.73	ea
BEXPRO-WH	Smart IP Bridge for Automation	\$ 404.25	ea

### Other Components

BER222	Single Wall Bracket	\$ 185.38	ea
BER223	Double Wall Bracket	\$ 210.24	ea
BER227	Ceiling Bracket	\$ 126.93	ea
BER225	Flush Ceiling Bracket	\$ 25.06	ea

### Finials

ALA124	Alassio Finial	\$ 323.37	ea
NAP126	Napoli Finial	\$ 401.63	ea
VER127	Verona Finial	\$ 438.11	ea
ISC125	Iscia Finial	\$ 277.52	ea
RIV122	Riva Finial	\$ 266.78	ea
PES123	Pescara Finial	\$ 319.36	ea
ROM129	Roma Finial	\$ 566.61	ea
TER133	Terra Finial	\$ 136.87	ea
TAH134	Tahoe Finial	\$ 174.86	ea
ZEN135	Zena Finial	\$ 170.27	ea



EDI136	Edil Finial	\$ 178.46	ea
ARD131	Ardea Finial	\$ 540.19	ea
ASO132	Socket for Ardea Finial	\$ 108.62	ea

## SEINE COLLECTION

page 54



SEI828	19' 7" Rail	\$ 55.11	ft
--------	-------------	----------	----

Available Finishes : SL, GT, AB

### Assembled "S" Motor

First 48"	\$ 3,116.19
Each Additional Foot	\$ 93.84

Assembled Pricing Includes: H-Rail cut to size, carriers, master carriers, motor pulleys, single brackets, motor "S", RF remote, and power supply. Freight not included.	<b>First 48"</b>	\$3,116.19	<b>144"</b>	\$3,866.91
	<b>60"</b>	\$3,210.03	<b>156"</b>	\$3,960.75
	<b>72"</b>	\$3,303.87	<b>168"</b>	\$4,054.59
	<b>84"</b>	\$3,397.71	<b>180"</b>	\$4,148.43
	<b>96"</b>	\$3,491.55	<b>192"</b>	\$4,242.27
	<b>108"</b>	\$3,585.39	<b>204"</b>	\$4,336.11
	<b>120"</b>	\$3,679.23	<b>216"</b>	\$4,429.95
	<b>132"</b>	\$3,773.07	<b>228"</b>	\$4,523.79

### Assembled "M" Motor

First 48"	\$ 3,212.06
Each Additional Foot	\$ 93.84

Assembled Pricing Includes: H-Rail cut to size, carriers, master carriers, motor pulleys, single brackets, motor "M", RF remote, and power supply. Freight not included.	<b>First 48"</b>	\$3,212.06	<b>144"</b>	\$3,962.78
	<b>60"</b>	\$3,305.90	<b>156"</b>	\$4,056.62
	<b>72"</b>	\$3,399.74	<b>168"</b>	\$4,150.46
	<b>84"</b>	\$3,493.58	<b>180"</b>	\$4,244.30
	<b>96"</b>	\$3,587.42	<b>192"</b>	\$4,338.14
	<b>108"</b>	\$3,681.26	<b>204"</b>	\$4,431.98
	<b>120"</b>	\$3,775.10	<b>216"</b>	\$4,525.82
	<b>132"</b>	\$3,868.94	<b>228"</b>	\$4,619.66

### Assembled "I" Motor

First 48"	\$ 3,297.53
Each Additional Foot	\$ 93.84

Assembled Pricing Includes: H-Rail cut to size, carriers, master carriers, motor pulleys, single brackets, motor "I", RF remote, and power supply. Freight not included.	<b>First 48"</b>	\$3,297.53	<b>144"</b>	\$4,048.25
	<b>60"</b>	\$3,391.37	<b>156"</b>	\$4,142.09
	<b>72"</b>	\$3,485.21	<b>168"</b>	\$4,235.93
	<b>84"</b>	\$3,579.05	<b>180"</b>	\$4,329.77
	<b>96"</b>	\$3,672.89	<b>192"</b>	\$4,423.61
	<b>108"</b>	\$3,766.73	<b>204"</b>	\$4,517.45
	<b>120"</b>	\$3,860.57	<b>216"</b>	\$4,611.29
	<b>132"</b>	\$3,954.41	<b>228"</b>	\$4,705.13

### Components

SEI121	End Cap Finial	\$ 47.53	ea
SEI124	Ball Finial	\$ 99.62	ea
SEI125	Notched Finial	\$ 54.87	ea
SEI226	Inside Mount Bracket	\$ 108.62	ea
SEI222	Extended Single Wall Bracket	\$ 90.42	ea
SEI227	Ceiling Bracket	\$ 129.35	ea
SEI225	Flushed Ceiling Bracket	\$ 25.06	ea
SEI501	Left Motor Pulley	\$ 454.55	ea
SEI502	Right Motor Pulley	\$ 454.55	ea
SEI511	Left Return Pulley	\$ 196.21	ea
SEI512	Right Return Pulley	\$ 196.21	ea
BEXPRO-WH	Smart IP Bridge for Automation	\$ 404.25	ea

## INDIGO COLLECTION

page 56



IND830	19' Rail	\$ 29.90	ft
--------	----------	----------	----

Available Finishes : WH, BA, GT, BK, TA

### Assembled

First 48"	\$ 729.75
Each Additional Foot	\$ 88.50

Assembled Pricing Includes: Rail cut to size, carriers, master carriers, end cap finials, single brackets, 36" fiberglass batons. Freight not included.	<b>First 48"</b>	\$ 729.75	<b>144"</b>	\$1,437.75
	<b>60"</b>	\$ 818.25	<b>156"</b>	\$1,526.25
	<b>72"</b>	\$ 906.75	<b>168"</b>	\$1,614.75
	<b>84"</b>	\$ 995.25	<b>180"</b>	\$1,703.25
	<b>96"</b>	\$1,083.75	<b>192"</b>	\$1,791.75
	<b>108"</b>	\$1,172.25	<b>204"</b>	\$1,880.25
	<b>120"</b>	\$1,260.75	<b>216"</b>	\$1,968.75
	<b>132"</b>	\$1,349.25	<b>228"</b>	\$2,057.25

### Components

IND131	End Cap Finial	\$ 52.50	ea
IND231	Curved Bracket	\$ 84.95	ea
IND232	Extended Curved Bracket	\$ 115.80	ea
IND233	Rectangular Wall Bracket	\$ 72.40	ea

IND234	Extended Rectangular Bracket	\$ 91.10	ea
IND235	Ceiling Bracket with Magnetic Cover	\$ 27.90	ea
PMAS108-WH	Master for Curves and Bends Over R	\$ 12.71	ea
PMAS109-WH	Master for Curves and Bends Under L	\$ 12.71	ea
RMAS308-WH	Cord Master w/Snaps Over Right	\$ 15.33	ea
RMAS309-WH	Cord Master w/Snaps Under Left	\$ 15.33	ea
BMAS209-WH	Left Butt Master w/3 Snaps	\$ 17.29	ea
BMAS210-WH	Right Butt Master w/3 Snaps	\$ 17.29	ea
BCAR04-WH	Small Ball Bearing	\$ 1.37	ea
RCARS60-WH	2 piece connected snap 60%	\$ 1.18	ea
RCARS80-WH	2 piece connected snap 80%	\$ 1.18	ea
RCARS100-WH	2 piece connected snap 100%	\$ 1.18	ea
RCARS120-WH	2 piece connected snap 120%	\$ 1.18	ea
END307	End Lock	\$ 0.94	ea
IND601	Rail Connector	\$ 15.65	ea

## SOFIA COLLECTION

page 58



SOF840	Rial 16'4"	\$ 35.23	ft
--------	------------	----------	----

Available Finishes : BK, BZ, AL

### Assembled

First 48"	\$ 677.99
Each Additional Foot	\$ 91.25

Assembled Pricing Includes: Rail cut to size, carriers, master carriers, end cap finials, single brackets, 36" fiberglass batons. Freight not included.	<b>First 48"</b>	\$ 677.99	<b>144"</b>	\$1,407.95
	<b>60"</b>	\$ 769.23	<b>156"</b>	\$1,499.19
	<b>72"</b>	\$ 860.48	<b>168"</b>	\$1,590.44
	<b>84"</b>	\$ 951.72	<b>180"</b>	\$1,681.68
	<b>96"</b>	\$1,042.97	<b>192"</b>	\$1,772.93
	<b>108"</b>	\$1,134.21	<b>204"</b>	\$1,864.17
	<b>120"</b>	\$1,225.46	<b>216"</b>	\$1,955.42
	<b>132"</b>	\$1,316.70	<b>228"</b>	\$2,046.66

### Assembled Corded

First 48"	\$ 776.16
Each Additional Foot	\$ 98.75

Assembled Pricing Includes: Rail cut to size, carriers, master carriers, end cap finials, single brackets, pulleys, cord and tension pulley. Freight not included.	<b>First 48"</b>	\$ 776.16	<b>144"</b>	\$1,566.18
	<b>60"</b>	\$ 874.91	<b>156"</b>	\$1,664.93
	<b>72"</b>	\$ 973.67	<b>168"</b>	\$1,763.69
	<b>84"</b>	\$1,072.42	<b>180"</b>	\$1,862.44
	<b>96"</b>	\$1,171.17	<b>192"</b>	\$1,961.19
	<b>108"</b>	\$1,269.92	<b>204"</b>	\$2,059.94
	<b>120"</b>	\$1,368.68	<b>216"</b>	\$2,158.70
	<b>132"</b>	\$1,467.43	<b>228"</b>	\$2,257.45

## Components

SOF141	End Cap Finial	\$ 46.89	ea
SOF251	Single Wall Bracket	\$ 108.97	ea
SOF250	Bracket Adaptor	\$ 33.40	ea
SOF255	Ceiling Bracket	\$ 48.00	ea
RCARS60-WH	2 piece connected snap 60%	\$ 1.18	ea
RCARS80-WH	2 piece connected snap 80%	\$ 1.18	ea
RCARS100-WH	2 piece connected snap 100%	\$ 1.18	ea
RCARS120-WH	2 piece connected snap 120%	\$ 1.18	ea
BCAR02-WH	Slim Ball Bearing Carrier	\$ 0.67	ea
RMAS301-WH	Ripplefold Master w/Snap and Adaptor Over R	\$ 8.78	ea
RMAS302-WH	Ripplefold Master w/Snap and Adaptor Under L	\$ 8.78	ea
PMAS101-WH	Pinch Pleat Master Multifunctional Over R	\$ 6.94	ea
PMAS102-WH	Pinch Pleat Master Multifunctional Under L	\$ 6.94	ea
SOF601	Decorative Splice	\$ 54.87	ea

## OXFORD COLLECTION

page 60



OXF828	Rail 10'	\$ 44.93	ft
--------	----------	----------	----

Available Finishes : BN, PL, BBK

### Assembled

First 48"	\$ 623.70
Each Additional Foot	\$ 80.85

Assembled Pricing Includes: Rail cut to size, carriers, master carriers, end cap finials, single brackets, 36" fiberglass batons. Freight not included.	<b>First 48"</b>	\$ 623.70	<b>144"</b>	\$1,270.50
	<b>60"</b>	\$ 704.55	<b>156"</b>	\$1,351.35
	<b>72"</b>	\$ 785.40	<b>168"</b>	\$1,432.20
	<b>84"</b>	\$ 866.25	<b>180"</b>	\$1,513.05
	<b>96"</b>	\$ 947.10	<b>192"</b>	\$1,593.90
	<b>108"</b>	\$1,027.95	<b>204"</b>	\$1,674.75
	<b>120"</b>	\$1,108.80	<b>216"</b>	\$1,755.60
	<b>132"</b>	\$1,189.65	<b>228"</b>	\$1,836.45

### Assembled Double

First 48"	\$ 1,128.44
Each Additional Foot	\$ 136.29

Assembled Pricing Includes: Rail cut to size, carriers, master carriers, end cap finials, double brackets, 36" fiberglass batons. Freight not included.	<b>First 48"</b>	\$1,128.44	<b>144"</b>	\$2,218.76
	<b>60"</b>	\$1,264.73	<b>156"</b>	\$2,355.05
	<b>72"</b>	\$1,401.02	<b>168"</b>	\$2,491.34
	<b>84"</b>	\$1,537.31	<b>180"</b>	\$2,627.63
	<b>96"</b>	\$1,673.60	<b>192"</b>	\$2,763.92
	<b>108"</b>	\$1,809.89	<b>204"</b>	\$2,900.21
	<b>120"</b>	\$1,946.18	<b>216"</b>	\$3,036.50
	<b>132"</b>	\$2,082.47	<b>228"</b>	\$3,172.79

## Components

OXF121	End Cap Finial	\$ 47.41	ea
OXF221	Ceiling Bracket	\$ 32.48	ea
OXF222	Single Wall Bracket	\$ 84.87	ea
OXF223	Double Wall Bracket	\$ 122.86	ea
RMAS301-WH	Ripplefold Master w/Snap and Adaptor Over R	\$ 8.78	ea
RMAS302-WH	Ripplefold Master w/Snap and Adaptor Under L	\$ 8.78	ea
PMAS101-WH	Pinch Pleat Master Multifunctional Over R	\$ 6.94	ea
PMAS102-WH	Pinch Pleat Master Multifunctional Under L	\$ 6.94	ea
BMAS209-WH	Butt Master w/3 Snaps Left	\$ 17.29	ea
BMAS210-WH	Butt Master w/3 Snaps Right	\$ 17.29	ea
RCARS60-WH	2 piece connected snap 60%	\$ 1.18	ea
RCARS80-WH	2 piece connected snap 80%	\$ 1.18	ea
RCARS100-WH	2 piece connected snap 100%	\$ 1.18	ea
RCARS120-WH	2 piece connected snap 120%	\$ 1.18	ea
BCAR02-WH	Slim Ball Bearing Carrier	\$ 0.67	ea
END307	End Lock	\$ 0.94	ea

## CANNES COLLECTION

page 62



CAN828	Rail 10' White	\$ 53.83	ft
--------	----------------	----------	----

### Assembled

First 48"	\$ 755.37
Each Additional Foot	\$ 96.44

Assembled Pricing Includes: Rail cut to size, carriers, master carriers, end cap finials, single brackets, 36" fiberglass batons. Freight not included.	<b>First 48"</b>	\$ 755.37	<b>144"</b>	\$1,526.91
	<b>60"</b>	\$ 851.81	<b>156"</b>	\$1,623.35
	<b>72"</b>	\$ 948.26	<b>168"</b>	\$1,719.80
	<b>84"</b>	\$1,044.70	<b>180"</b>	\$1,816.24
	<b>96"</b>	\$1,141.14	<b>192"</b>	\$1,912.68
	<b>108"</b>	\$1,237.58	<b>204"</b>	\$2,009.12
	<b>120"</b>	\$1,334.03	<b>216"</b>	\$2,105.57
	<b>132"</b>	\$1,430.47	<b>228"</b>	\$2,202.01

### Assembled Double

First 48"	\$ 1,354.82
Each Additional Foot	\$ 170.94

Assembled Pricing Includes: Rail cut to size, carriers, master carriers, end cap finials, double brackets, 36" fiberglass batons. Freight not included.	<b>First 48"</b>	\$1,354.82	<b>144"</b>	\$2,722.34
	<b>60"</b>	\$1,525.76	<b>156"</b>	\$2,893.28
	<b>72"</b>	\$1,696.70	<b>168"</b>	\$3,064.22
	<b>84"</b>	\$1,867.64	<b>180"</b>	\$3,235.16
	<b>96"</b>	\$2,038.58	<b>192"</b>	\$3,406.10
	<b>108"</b>	\$2,209.52	<b>204"</b>	\$3,577.04
	<b>120"</b>	\$2,380.46	<b>216"</b>	\$3,747.98
	<b>132"</b>	\$2,551.40	<b>228"</b>	\$3,918.92

## Components

CAB121	End Cap Finial	\$ 47.41	ea
CAN221	Ceiling Bracket	\$ 32.48	ea
CAN222	Single Wall Bracket	\$ 84.87	ea
CAN223	Double Wall Bracket	\$ 122.86	ea
RMAS301-WH	Ripplefold Master w/Snap and Adaptor Over R	\$ 8.78	ea
RMAS302-WH	Ripplefold Master w/Snap and Adaptor Under L	\$ 8.78	ea
PMAS101-WH	Pinch Pleat Master Multifunctional Over R	\$ 6.94	ea
PMAS102-WH	Pinch Pleat Master Multifunctional Under L	\$ 6.94	ea
BMAS209-WH	Butt Master w/3 Snaps Left	\$ 17.29	ea
BMAS210-WH	Butt Master w/3 Snaps Right	\$ 17.29	ea
RCARS60-WH	2 piece connected snap 60%	\$ 1.18	ea
RCARS80-WH	2 piece connected snap 80%	\$ 1.18	ea
RCARS100-WH	2 piece connected snap 100%	\$ 1.18	ea
RCARS120-WH	2 piece connected snap 120%	\$ 1.18	ea
BCAR02-WH	Slim Ball Bearing Carrier	\$ 0.67	ea
END307	End Lock	\$ 0.94	ea

## MANHATTAN COLLECTION

page 64



MTN835	Rail 19'	\$ 48.45	ft
--------	----------	----------	----

Available Finishes : WH, BK, GT, SN, BA, GM, BG, BZ, CH

### Assembled "Ultra 35" Class Motor

First 48"	\$2,875.90
Each Additional Foot	\$ 105.80

Assembled Pricing Includes: Rail cut to size, carriers, master carriers, decorative motor pulley, single brackets, motor Somfy Ultra 35, power supply, and RF remote. Freight not included.	<b>First 48"</b>	<b>\$2,875.90</b>	<b>144"</b>	<b>\$3,722.30</b>
	<b>60"</b>	<b>\$2,981.70</b>	<b>156"</b>	<b>\$3,828.10</b>
	<b>72"</b>	<b>\$3,087.50</b>	<b>168"</b>	<b>\$3,933.90</b>
	<b>84"</b>	<b>\$3,193.30</b>	<b>180"</b>	<b>\$4,039.70</b>
	<b>96"</b>	<b>\$3,299.10</b>	<b>192"</b>	<b>\$4,145.50</b>
	<b>108"</b>	<b>\$3,404.90</b>	<b>204"</b>	<b>\$4,251.30</b>
	<b>120"</b>	<b>\$3,510.70</b>	<b>216"</b>	<b>\$4,357.10</b>
	<b>132"</b>	<b>\$3,616.50</b>	<b>228"</b>	<b>\$4,462.90</b>

### Assembled "Ultra 60" Class Motor

First 48"	\$3,195.80
Each Additional Foot	\$ 105.80

Assembled Pricing Includes: Rail cut to size, carriers, master carriers, decorative motor pulley, single brackets, motor Somfy Ultra 60, power supply, and RF remote. Freight not included.	<b>First 48"</b>	\$3,195.80	<b>144"</b>	\$4,042.20
	<b>60"</b>	\$3,301.60	<b>156"</b>	\$4,148.00
	<b>72"</b>	\$3,407.40	<b>168"</b>	\$4,253.80
	<b>84"</b>	\$3,513.20	<b>180"</b>	\$4,359.60
	<b>96"</b>	\$3,619.00	<b>192"</b>	\$4,465.40
	<b>108"</b>	\$3,724.80	<b>204"</b>	\$4,571.20
	<b>120"</b>	\$3,830.60	<b>216"</b>	\$4,677.00
	<b>132"</b>	\$3,936.40	<b>228"</b>	\$4,782.80

#### Assembled "I-45" Class Motor

First 48"	\$ 3,195.80
Each Additional Foot	\$ 105.80

Assembled Pricing Includes: Rail cut to size, carriers, master carriers, decorative motor pulley, single brackets, motor Somfy I-45, power supply, and RF remote. Freight not included.	<b>First 48"</b>	\$3,195.80	<b>144"</b>	\$4,042.20
	<b>60"</b>	\$3,301.60	<b>156"</b>	\$4,148.00
	<b>72"</b>	\$3,407.40	<b>168"</b>	\$4,253.80
	<b>84"</b>	\$3,513.20	<b>180"</b>	\$4,359.60
	<b>96"</b>	\$3,619.00	<b>192"</b>	\$4,465.40
	<b>108"</b>	\$3,724.80	<b>204"</b>	\$4,571.20
	<b>120"</b>	\$3,830.60	<b>216"</b>	\$4,677.00
	<b>132"</b>	\$3,936.40	<b>228"</b>	\$4,782.80

#### Assembled "D1" Class Motor

First 48"	\$ 2,315.50
Each Additional Foot	\$ 88.70

Assembled Pricing Includes: Rail cut to size, carriers, master carriers, decorative motor pulley, single brackets, motor D1, power supply, and RF remote. Freight not included.	<b>First 48"</b>	\$2,315.50	<b>144"</b>	\$3,025.10
	<b>60"</b>	\$2,404.20	<b>156"</b>	\$3,113.80
	<b>72"</b>	\$2,492.90	<b>168"</b>	\$3,202.50
	<b>84"</b>	\$2,581.60	<b>180"</b>	\$3,291.20
	<b>96"</b>	\$2,670.30	<b>192"</b>	\$3,379.90
	<b>108"</b>	\$2,759.00	<b>204"</b>	\$3,468.60
	<b>120"</b>	\$2,847.70	<b>216"</b>	\$3,557.30
	<b>132"</b>	\$2,936.40	<b>228"</b>	\$3,646.00

#### Assembled "D3-W" Class Motor

First 48"	\$ 2,105.50
Each Additional Foot	\$ 88.70

Assembled Pricing Includes: Rail cut to size, carriers, master carriers, decorative motor pulley, single brackets, motor D3-W, power supply, and RF remote. Freight not included.	<b>First 48"</b>	\$2,105.50	<b>144"</b>	\$2,815.10
	<b>60"</b>	\$2,194.20	<b>156"</b>	\$2,903.80
	<b>72"</b>	\$2,282.90	<b>168"</b>	\$2,992.50
	<b>84"</b>	\$2,371.60	<b>180"</b>	\$3,081.20
	<b>96"</b>	\$2,460.30	<b>192"</b>	\$3,169.90
	<b>108"</b>	\$2,549.00	<b>204"</b>	\$3,258.60
	<b>120"</b>	\$2,637.70	<b>216"</b>	\$3,347.30
	<b>132"</b>	\$2,726.40	<b>228"</b>	\$3,436.00

# ATLAS COLLECTION

page 66



ATL835 Rail 19'  
 Available Finishes : WH, BK, BN, WG, MB, SG

### Assembled "Ultra 35" Class Motor

First 48"	\$ 4,871.80
Each Additional Foot	\$ 175.35

Assembled Pricing Includes: Rail cut to size, carriers, master carriers, decorative motor pulley, single brackets, motor Somfy Ultra 35, power supply, and RF remote. Freight not included.	<b>First 48"</b>	\$4,871.80	<b>144"</b>	\$6,274.60
	<b>60"</b>	\$5,047.15	<b>156"</b>	\$6,449.95
	<b>72"</b>	\$5,222.50	<b>168"</b>	\$6,625.30
	<b>84"</b>	\$5,397.85	<b>180"</b>	\$6,800.65
	<b>96"</b>	\$5,573.20	<b>192"</b>	\$6,976.00
	<b>108"</b>	\$5,748.55	<b>204"</b>	\$7,151.35
	<b>120"</b>	\$5,923.90	<b>216"</b>	\$7,326.70
	<b>132"</b>	\$6,099.25	<b>228"</b>	\$7,502.05

### Assembled "Ultra 60" Class Motor

First 48"	\$ 5,446.65
Each Additional Foot	\$ 175.35

Assembled Pricing Includes: Rail cut to size, carriers, master carriers, decorative motor pulley, single brackets, motor Somfy Ultra 60, power supply, and RF remote. Freight not included.	<b>First 48"</b>	\$5,446.65	<b>144"</b>	\$6,849.45
	<b>60"</b>	\$5,622.00	<b>156"</b>	\$7,024.80
	<b>72"</b>	\$5,797.35	<b>168"</b>	\$7,200.15
	<b>84"</b>	\$5,972.70	<b>180"</b>	\$7,375.50
	<b>96"</b>	\$6,148.05	<b>192"</b>	\$7,550.85
	<b>108"</b>	\$6,323.40	<b>204"</b>	\$7,726.20
	<b>120"</b>	\$6,498.75	<b>216"</b>	\$7,901.55
	<b>132"</b>	\$6,674.10	<b>228"</b>	\$8,076.90

### Assembled "I-45" Class Motor

First 48"	\$ 5,328.48
Each Additional Foot	\$ 175.35



Assembled Pricing Includes: Rail cut to size, carriers, master carriers, decorative motor pulley, single brackets, motor Somfy I-45, power supply, and RF remote. Freight not included.	<b>First 48"</b>	\$5,328.48	<b>144"</b>	\$6,731.28
	<b>60"</b>	\$5,503.83	<b>156"</b>	\$6,906.63
	<b>72"</b>	\$5,679.18	<b>168"</b>	\$7,081.98
	<b>84"</b>	\$5,854.53	<b>180"</b>	\$7,257.33
	<b>96"</b>	\$6,029.88	<b>192"</b>	\$7,432.68
	<b>108"</b>	\$6,205.23	<b>204"</b>	\$7,608.03
	<b>120"</b>	\$6,380.58	<b>216"</b>	\$7,783.38
	<b>132"</b>	\$6,555.93	<b>228"</b>	\$7,958.73

## VERONA COLLECTION

page 68



VER828	Rail 8'		\$ 53.83	ft
<i>Available Finishes : WH, SL, ES</i>				

### Assembled

First 48"		\$ 755.37	
Each Additional Foot		\$ 96.44	

Assembled Pricing Includes: Rail cut to size, carriers, master carriers, end cap finials, single brackets, 36" fiberglass batons. Freight not included.	<b>First 48"</b>	\$ 755.37	<b>144"</b>	\$1,526.91
	<b>60"</b>	\$ 851.81	<b>156"</b>	\$1,623.35
	<b>72"</b>	\$ 948.26	<b>168"</b>	\$1,719.80
	<b>84"</b>	\$1,044.70	<b>180"</b>	\$1,816.24
	<b>96"</b>	\$1,141.14	<b>192"</b>	\$1,912.68
	<b>108"</b>	\$1,237.58	<b>204"</b>	\$2,009.12
	<b>120"</b>	\$1,334.03	<b>216"</b>	\$2,105.57
	<b>132"</b>	\$1,430.47	<b>228"</b>	\$2,202.01

### Assembled Double

First 48"		\$ 1,354.82	
Each Additional Foot		\$ 171.23	

Assembled Pricing Includes: Rail cut to size, carriers, master carriers, end cap finials, double brackets, 36" fiberglass batons. Freight not included.	<b>First 48"</b>	\$1,354.82	<b>144"</b>	\$2,724.65
	<b>60"</b>	\$1,526.04	<b>156"</b>	\$2,895.87
	<b>72"</b>	\$1,697.27	<b>168"</b>	\$3,067.10
	<b>84"</b>	\$1,868.50	<b>180"</b>	\$3,238.33
	<b>96"</b>	\$2,039.73	<b>192"</b>	\$3,409.56
	<b>108"</b>	\$2,210.96	<b>204"</b>	\$3,580.79
	<b>120"</b>	\$2,382.19	<b>216"</b>	\$3,752.02
	<b>132"</b>	\$2,553.42	<b>228"</b>	\$3,923.25

### Components

VER121	End Cap Finial	\$ 47.41	ea
VER221	Ceiling Bracket	\$ 32.48	ea
VER222	Single Wall Bracket	\$ 84.87	ea
VER223	Double Wall Bracket	\$ 122.86	ea
RMAS301-WH	Ripplefold Master w/Snap and Adaptor Over R	\$ 8.78	ea

RMAS302-WH	Ripplefold Master w/Snap and Adaptor Under L	\$ 8.78	ea
PMAS101-WH	Pinch Pleat Master Multifunctional Over R	\$ 6.94	ea
PMAS102-WH	Pinch Pleat Master Multifunctional Under L	\$ 6.94	ea
BMAS209-WH	Butt Master w/3 Snaps Left	\$ 17.29	ea
BMAS210-WH	Butt Master w/3 Snaps Right	\$ 17.29	ea
RCARS60-WH	2 piece connected snap 60%	\$ 1.18	ea
RCARS80-WH	2 piece connected snap 80%	\$ 1.18	ea
RCARS100-WH	2 piece connected snap 100%	\$ 1.18	ea
RCARS120-WH	2 piece connected snap 120%	\$ 1.18	ea
BCAR02-WH	Slim Ball Bearing Carrier	\$ 0.67	ea
END307	End Lock	\$ 0.94	ea

## LIVERPOOL COLLECTION

page 70



LIV838	Square Rail 19'7"	\$ 62.30	ft
--------	-------------------	----------	----

Available Finishes : BK, PC, BN

### Assembled

First 48"	\$ 949.41
Each Additional Foot	\$ 183.65

Assembled Pricing Includes: Rail cut to size, carriers, master carriers, end cap finials, single brackets, 36" fiberglass batons. Freight not included.	<b>First 48"</b>	\$ 949.41	<b>144"</b>	\$2,418.57
	<b>60"</b>	\$1,133.06	<b>156"</b>	\$2,602.22
	<b>72"</b>	\$1,316.70	<b>168"</b>	\$2,785.86
	<b>84"</b>	\$1,500.35	<b>180"</b>	\$2,969.51
	<b>96"</b>	\$1,683.99	<b>192"</b>	\$3,153.15
	<b>108"</b>	\$1,867.64	<b>204"</b>	\$3,336.80
	<b>120"</b>	\$2,051.28	<b>216"</b>	\$3,520.44
	<b>132"</b>	\$2,234.93	<b>228"</b>	\$3,704.09

### Components

LIV141	End Cap Finial	\$ 55.97	ea
LIV255	Flush Ceiling Bracket	\$ 28.84	ea
LIV241	Wall Bracket	\$ 229.50	ea
LIV243	Double Wall Bracket	\$ 304.31	ea
LIV250	Bracket Extension	\$ 68.85	ea
LIV244	Ceiling Bracket	\$ 110.15	ea
LIV227	Hiddle Wall Bracket	\$ 251.65	ea
RMAS301-WH	Ripplefold Master w/Snap and Adaptor Over R	\$ 8.78	ea
RMAS302-WH	Ripplefold Master w/Snap and Adaptor Under L	\$ 8.78	ea
PMAS101-WH	Pinch Pleat Master Multifunctional Over R	\$ 6.94	ea
PMAS102-WH	Pinch Pleat Master Multifunctional Under L	\$ 6.94	ea
BMAS209-WH	Butt Master w/3 Snaps Left	\$ 17.29	ea
BMAS210-WH	Butt Master w/3 Snaps Right	\$ 17.29	ea

LIV601	Rail Connector	\$ 23.94	ea
BCAR02-WH	Slim Ball Bearing Carrier	\$ 0.67	ea
END306	End Stop	\$ 0.89	ea
RCARS60-WH	2 piece connected snap 60%	\$ 1.18	ea
RCARS80-WH	2 piece connected snap 80%	\$ 1.18	ea
RCARS100-WH	2 piece connected snap 100%	\$ 1.18	ea
RCARS120-WH	2 piece connected snap 120%	\$ 1.18	ea
RCARB60-WH	B/B connected snap 60%	\$ 1.91	ea
RCARB80-WH	B/B connected snap 80%	\$ 1.91	ea
RCARB100-WH	B/B connected snap 100%	\$ 1.91	ea
RCARB120-WH	B/B connected snap 120%	\$ 1.91	ea

## LENOX COLLECTION

page 72

LEN830	Rectangular Rail 19' *BA, BG 13*	\$ 39.90	ft
--------	----------------------------------	----------	----

*Available Finishes : WH, BK, GT, SN, BA, GM, BG, BZ, CH*

### Assembled

First 48"	\$ 610.95
Each Additional Foot	\$ 119.20

Assembled Pricing Includes: Rail cut to size, carriers, master carriers, end cap finials, single brackets, 36" fiberglass batons. Freight not included.	<b>First 48"</b>	\$ 610.95	<b>144"</b>	\$1,564.55
	<b>60"</b>	\$ 730.15	<b>156"</b>	\$1,683.75
	<b>72"</b>	\$ 849.35	<b>168"</b>	\$1,802.95
	<b>84"</b>	\$ 968.55	<b>180"</b>	\$1,922.15
	<b>96"</b>	\$1,087.75	<b>192"</b>	\$2,041.35
	<b>108"</b>	\$1,206.95	<b>204"</b>	\$2,160.55
	<b>120"</b>	\$1,326.15	<b>216"</b>	\$2,279.75
	<b>132"</b>	\$1,445.35	<b>228"</b>	\$2,398.95

### Components

LEN131	Flushed End Cap Finial	\$ 42.50	ea
LEN231	Single Wall Bracket	\$ 89.10	ea
LEN235	Ceiling Bracket	\$ 27.80	ea
RMAS301-WH	Ripplefold Master w/Snap and Adaptor Over R	\$ 8.78	ea
RMAS302-WH	Ripplefold Master w/Snap and Adaptor Under L	\$ 8.78	ea
PMAS101-WH	Pinch Pleat Master Multifunctional Over R	\$ 6.94	ea
PMAS102-WH	Pinch Pleat Master Multifunctional Under L	\$ 6.94	ea
BMAS209-WH	Butt Master w/3 Snaps Left	\$ 17.29	ea
BMAS210-WH	Butt Master w/3 Snaps Right	\$ 17.29	ea
RCARS60-WH	2 piece connected snap 60%	\$ 1.18	ea
RCARS80-WH	2 piece connected snap 80%	\$ 1.18	ea
RCARS100-WH	2 piece connected snap 100%	\$ 1.18	ea
RCARS120-WH	2 piece connected snap 120%	\$ 1.18	ea
RCARB60-WH	B/B connected snap 60%	\$ 1.91	ea
RCARB80-WH	B/B connected snap 80%	\$ 1.91	ea

RCARB100-WH	B/B connected snap 100%	\$	1.91	ea
RCARB120-WH	B/B connected snap 120%	\$	1.91	ea
BCAR02-WH	Slim Ball Bearing Carrier	\$	0.67	ea
END306	End Stop	\$	0.89	ea

## BRAXTON COLLECTION

page 74



BXT832	Rail 19'	\$	49.20	ft
--------	----------	----	-------	----

*Available Finishes : WH, BK, GT, SN, BA, GM, BG, BZ, CH*

### Assembled "Ultra 35" Class Motor

First 48"	\$ 2,875.90
Each Additional Foot	\$ 105.80

Assembled Pricing Includes: Rail cut to size, carriers, master carriers, decorative motor pulley, single brackets, motor Somfy Ultra 35, power supply, and RF remote. Freight not included.	<b>First 48"</b>	\$2,875.90	<b>144"</b>	\$3,722.30
	<b>60"</b>	\$2,981.70	<b>156"</b>	\$3,828.10
	<b>72"</b>	\$3,087.50	<b>168"</b>	\$3,933.90
	<b>84"</b>	\$3,193.30	<b>180"</b>	\$4,039.70
	<b>96"</b>	\$3,299.10	<b>192"</b>	\$4,145.50
	<b>108"</b>	\$3,404.90	<b>204"</b>	\$4,251.30
	<b>120"</b>	\$3,510.70	<b>216"</b>	\$4,357.10
	<b>132"</b>	\$3,616.50	<b>228"</b>	\$4,462.90

### Assembled "Ultra 60" Class Motor

First 48"	\$ 3,195.80
Each Additional Foot	\$ 105.80

Assembled Pricing Includes: Rail cut to size, carriers, master carriers, decorative motor pulley, single brackets, motor Somfy Ultra 60, power supply, and RF remote. Freight not included.	<b>First 48"</b>	\$3,195.80	<b>144"</b>	\$4,042.20
	<b>60"</b>	\$3,301.60	<b>156"</b>	\$4,148.00
	<b>72"</b>	\$3,407.40	<b>168"</b>	\$4,253.80
	<b>84"</b>	\$3,513.20	<b>180"</b>	\$4,359.60
	<b>96"</b>	\$3,619.00	<b>192"</b>	\$4,465.40
	<b>108"</b>	\$3,724.80	<b>204"</b>	\$4,571.20
	<b>120"</b>	\$3,830.60	<b>216"</b>	\$4,677.00
	<b>132"</b>	\$3,936.40	<b>228"</b>	\$4,782.80

### Assembled "I-45" Class Motor

First 48"	\$ 3,195.80
Each Additional Foot	\$ 105.80

Assembled Pricing Includes: Rail cut to size, carriers, master carriers, decorative motor pulley, single brackets, motor Somfy I-45, power supply, and RF remote. Freight not included.	<b>First 48"</b>	\$3,195.80	<b>144"</b>	\$4,042.20
	<b>60"</b>	\$3,301.60	<b>156"</b>	\$4,148.00
	<b>72"</b>	\$3,407.40	<b>168"</b>	\$4,253.80
	<b>84"</b>	\$3,513.20	<b>180"</b>	\$4,359.60
	<b>96"</b>	\$3,619.00	<b>192"</b>	\$4,465.40
	<b>108"</b>	\$3,724.80	<b>204"</b>	\$4,571.20
	<b>120"</b>	\$3,830.60	<b>216"</b>	\$4,677.00
	<b>132"</b>	\$3,936.40	<b>228"</b>	\$4,782.80

**Assembled "D1" Class Motor**

First 48"	\$ 2,315.50
Each Additional Foot	\$ 88.70

Assembled Pricing Includes: Rail cut to size, carriers, master carriers, decorative motor pulley, single brackets, motor D1, power supply, and RF remote. Freight not included.	<b>First 48"</b>	\$2,315.50	<b>144"</b>	\$3,025.10
	<b>60"</b>	\$2,404.20	<b>156"</b>	\$3,113.80
	<b>72"</b>	\$2,492.90	<b>168"</b>	\$3,202.50
	<b>84"</b>	\$2,581.60	<b>180"</b>	\$3,291.20
	<b>96"</b>	\$2,670.30	<b>192"</b>	\$3,379.90
	<b>108"</b>	\$2,759.00	<b>204"</b>	\$3,468.60
	<b>120"</b>	\$2,847.70	<b>216"</b>	\$3,557.30
	<b>132"</b>	\$2,936.40	<b>228"</b>	\$3,646.00

**Assembled "D3-W" Class Motor**

First 48"	\$ 2,105.50
Each Additional Foot	\$ 88.70

Assembled Pricing Includes: Rail cut to size, carriers, master carriers, decorative motor pulley, single brackets, motor D3-W, power supply, and RF remote. Freight not included.	<b>First 48"</b>	\$2,105.50	<b>144"</b>	\$2,815.10
	<b>60"</b>	\$2,194.20	<b>156"</b>	\$2,903.80
	<b>72"</b>	\$2,282.90	<b>168"</b>	\$2,992.50
	<b>84"</b>	\$2,371.60	<b>180"</b>	\$3,081.20
	<b>96"</b>	\$2,460.30	<b>192"</b>	\$3,169.90
	<b>108"</b>	\$2,549.00	<b>204"</b>	\$3,258.60
	<b>120"</b>	\$2,637.70	<b>216"</b>	\$3,347.30
	<b>132"</b>	\$2,726.40	<b>228"</b>	\$3,436.00

**KIEL COLLECTION**

page 76



KIE840	Rectangle Rail 19'7"	\$ 50.39	ft
<i>Available Finishes : BK, PC, SN</i>			

**Assembled**

First 48"	\$ 995.61
Each Additional Foot	\$ 213.68

Assembled Pricing Includes: Rail cut to size, carriers, master carriers, end cap finials, single brackets, 36" fiberglass batons. Freight not included.	<b>First 48"</b>	\$ 995.61	<b>144"</b>	\$2,705.01
	<b>60"</b>	\$1,209.29	<b>156"</b>	\$2,918.69
	<b>72"</b>	\$1,422.96	<b>168"</b>	\$3,132.36
	<b>84"</b>	\$1,636.64	<b>180"</b>	\$3,346.04
	<b>96"</b>	\$1,850.31	<b>192"</b>	\$3,559.71
	<b>108"</b>	\$2,063.99	<b>204"</b>	\$3,773.39
	<b>120"</b>	\$2,277.66	<b>216"</b>	\$3,987.06
	<b>132"</b>	\$2,491.34	<b>228"</b>	\$4,200.74

### Components

KIE143	Square Finial w/Spacer	\$ 253.88	ea
KIE142	Square Finial	\$ 146.78	ea
KIE141	End Cap Finial	\$ 83.30	ea
KIE242	Single Wall Bracket	\$ 269.74	ea
KIE241	Short Single Wall Bracket	\$ 232.54	ea
KIE243	Double Wall Bracket	\$ 323.68	ea
KIE247	Inside Mount Bracket	\$ 142.80	ea
KIE244	Ceiling Bracket 5/8"	\$ 110.15	ea
KIE246-AL	Ceiling Bracket 1/8"	\$ 28.84	ea
KIE248-AL	Flush Ceiling Bracket	\$ 50.43	ea
KIE245	Invisible Wall Bracket	\$ 251.65	ea
KIE601	Rail Connector	\$ 23.94	ea
RCARS60-WH	2 piece connected snap 60%	\$ 1.18	ea
RCARS80-WH	2 piece connected snap 80%	\$ 1.18	ea
RCARS100-WH	2 piece connected snap 100%	\$ 1.18	ea
RCARS120-WH	2 piece connected snap 120%	\$ 1.18	ea
BCAR02-WH	Slim Ball Bearing Carrier	\$ 0.67	ea
END306-WH	End Stop	\$ 0.89	ea
KMAS230-WH	Plastic Overlap Master for Pinch Pleat or Ripplefold	\$ 12.87	ea
KMAS240-WH	Plastic Underlap Master for Pinch Pleat or Ripplefold	\$ 12.87	ea

## AVALON COLLECTION

page 78



AVA850	2" Decorative Rail 20'	\$ 41.26	ft
<i>Available Finishes : WH, SN, BZ, BK</i>		\$ 63.12	ft
<i>Special Finishes WL, OA</i>			

### Assembled

First 48"	\$ 701.09
Each Additional Foot	\$ 91.25

Assembled Pricing Includes: Rail cut to size, carriers, master carriers, end cap finials, single brackets, 36" fiberglass batons. Freight not included.	<b>First 48"</b>	\$ 701.09	<b>144"</b>	\$1,431.05
	<b>60"</b>	\$ 792.33	<b>156"</b>	\$1,522.29
	<b>72"</b>	\$ 883.58	<b>168"</b>	\$1,613.54
	<b>84"</b>	\$ 974.82	<b>180"</b>	\$1,704.78
	<b>96"</b>	\$1,066.07	<b>192"</b>	\$1,796.03
	<b>108"</b>	\$1,157.31	<b>204"</b>	\$1,887.27
	<b>120"</b>	\$1,248.56	<b>216"</b>	\$1,978.52
	<b>132"</b>	\$1,339.80	<b>228"</b>	\$2,069.76

### Assembled Double

First 48"	\$ 1,151.54
Each Additional Foot	\$ 144.95

Assembled Pricing Includes: Rail cut to size, carriers, master carriers, end cap finials, double brackets, 36" fiberglass batons. Freight not included.	<b>First 48"</b>	\$1,151.54	<b>144"</b>	\$2,311.16
	<b>60"</b>	\$1,296.49	<b>156"</b>	\$2,456.11
	<b>72"</b>	\$1,441.44	<b>168"</b>	\$2,601.06
	<b>84"</b>	\$1,586.39	<b>180"</b>	\$2,746.01
	<b>96"</b>	\$1,731.35	<b>192"</b>	\$2,890.97
	<b>108"</b>	\$1,876.30	<b>204"</b>	\$3,035.92
	<b>120"</b>	\$2,021.25	<b>216"</b>	\$3,180.87
	<b>132"</b>	\$2,166.20	<b>228"</b>	\$3,325.82

### Assembled Corded

First 48"	\$ 842.00
Each Additional Foot	\$ 109.73

Assembled Pricing Includes: Rail cut to size, carriers, master carriers, end cap finials, single brackets, pulleys, cord and tension pulley. Freight not included.	<b>First 48"</b>	\$ 842.00	<b>144"</b>	\$1,719.80
	<b>60"</b>	\$ 951.72	<b>156"</b>	\$1,829.52
	<b>72"</b>	\$1,061.45	<b>168"</b>	\$1,939.25
	<b>84"</b>	\$1,171.17	<b>180"</b>	\$2,048.97
	<b>96"</b>	\$1,280.90	<b>192"</b>	\$2,158.70
	<b>108"</b>	\$1,390.62	<b>204"</b>	\$2,268.42
	<b>120"</b>	\$1,500.35	<b>216"</b>	\$2,378.15
	<b>132"</b>	\$1,610.07	<b>228"</b>	\$2,487.87

### Components

AVA151	Sage Finial	\$ 51.73	ea
AVA152	Eden Finial	\$ 60.51	ea
AVA153	Ness Finial	\$ 65.10	ea
AVA150	End Cap Finial	\$ 39.85	ea
AVA227	Ceiling Bracket	\$ 34.19	ea
AVA228	Invisible Wall Bracket	\$ 64.83	ea
AVA221	Single Wall Bracket	\$ 76.62	ea
AVA223	Double Wall Bracket	\$ 108.58	ea
AVA225	Flush Ceiling Bracket	\$ 20.50	ea
AVA455	90 Degree Corner Connector	\$ 81.87	ea
AVA602	Small Mounting Block	\$ 1.28	ea
AVA601	Rail Splice Connector	\$ 15.65	ea

AVA605	Extra Long HD Splice	\$ 23.45	ea
--------	----------------------	----------	----

## TURIN COLLECTION

page 80



TUR828	2" Decorative Rail 10'	\$ 49.38	ft
--------	------------------------	----------	----

Available Finishes : PL, BN

### Assembled

First 48"	\$ 687.23
-----------	-----------

Each Additional Foot	\$ 88.94
----------------------	----------

Assembled Pricing Includes: Rail cut to size, carriers, master carriers, end cap finials, single brackets, 36" fiberglass batons. Freight not included.	<b>First 48"</b>	\$ 687.23	<b>144"</b>	\$1,398.71
	<b>60"</b>	\$ 776.16	<b>156"</b>	\$1,487.64
	<b>72"</b>	\$ 865.10	<b>168"</b>	\$1,576.58
	<b>84"</b>	\$ 954.03	<b>180"</b>	\$1,665.51
	<b>96"</b>	\$1,042.97	<b>192"</b>	\$1,754.45
	<b>108"</b>	\$1,131.90	<b>204"</b>	\$1,843.38
	<b>120"</b>	\$1,220.84	<b>216"</b>	\$1,932.32
	<b>132"</b>	\$1,309.77	<b>228"</b>	\$2,021.25

### Assembled Double

First 48"	\$1,258.37
-----------	------------

Each Additional Foot	\$ 154.77
----------------------	-----------

Assembled Pricing Includes: Rail cut to size, carriers, master carriers, end cap finials, double brackets, 36" fiberglass batons. Freight not included.	<b>First 48"</b>	\$1,258.37	<b>144"</b>	\$2,496.53
	<b>60"</b>	\$1,413.14	<b>156"</b>	\$2,651.30
	<b>72"</b>	\$1,567.91	<b>168"</b>	\$2,806.07
	<b>84"</b>	\$1,722.68	<b>180"</b>	\$2,960.84
	<b>96"</b>	\$1,877.45	<b>192"</b>	\$3,115.61
	<b>108"</b>	\$2,032.22	<b>204"</b>	\$3,270.38
	<b>120"</b>	\$2,186.99	<b>216"</b>	\$3,425.15
	<b>132"</b>	\$2,341.76	<b>228"</b>	\$3,579.92

### Components

TUR121	End Cap Finial	\$ 47.41	ea
TUR221	Ceiling Bracket	\$ 32.48	ea
TUR222	Single Wall Bracket	\$ 84.87	ea
TUR223	Double Wall Bracket	\$ 122.86	ea
RMAS301-WH	Ripplefold Master w/Snap and Adaptor Over R	\$ 8.78	ea
RMAS302-WH	Ripplefold Master w/Snap and Adaptor Under L	\$ 8.78	ea
PMAS101-WH	Pinch Pleat Master Multifunctional Over R	\$ 6.94	ea
PMAS102-WH	Pinch Pleat Master Multifunctional Under L	\$ 6.94	ea
BMAS209-WH	Butt Master w/3 Snaps Left	\$ 17.29	ea
BMAS210-WH	Butt Master w/3 Snaps Right	\$ 17.29	ea
BMAS401-WH	2-Piece Butt Master Right	\$ 26.28	ea



BMAS402-WH	2-Piece Butt Master Left	\$ 26.28	ea
RCARS60-WH	2 piece connected snap 60%	\$ 1.18	ea
RCARS80-WH	2 piece connected snap 80%	\$ 1.18	ea
RCARS100-WH	2 piece connected snap 100%	\$ 1.18	ea
RCARS120-WH	2 piece connected snap 120%	\$ 1.18	ea
RCARB60-WH	B/B connected snap 60%	\$ 0.67	ea
RCARB80-WH	B/B connected snap 80%	\$ 0.89	ea
RCARB100-WH	B/B connected snap 100%	\$ 12.87	ea
RCARB120-WH	B/B connected snap 120%	\$ 12.87	ea
BCAR02-WH	Slim Ball Bearing Carrier	\$ 0.67	ea
END307	End Lock	\$ 0.94	ea

## BRUSSELS COLLECTION

page 82



BRU828	2" Decorative Rail 8'	\$ 81.83	ft
--------	-----------------------	----------	----

Available Finishes : WH, WW, BK, GW, SL

### Assembled

First 48"	\$ 822.36
Each Additional Foot	\$ 115.50

Assembled Pricing Includes: Rail cut to size, carriers, master carriers, end cap finials, single brackets, 36" fiberglass batons. Freight not included.	<b>First 48"</b>	\$ 822.36	<b>144"</b>	\$1,746.36
	<b>60"</b>	\$ 937.86	<b>156"</b>	\$1,861.86
	<b>72"</b>	\$1,053.36	<b>168"</b>	\$1,977.36
	<b>84"</b>	\$1,168.86	<b>180"</b>	\$2,092.86
	<b>96"</b>	\$1,284.36	<b>192"</b>	\$2,208.36
	<b>108"</b>	\$1,399.86	<b>204"</b>	\$2,323.86
	<b>120"</b>	\$1,515.36	<b>216"</b>	\$2,439.36
	<b>132"</b>	\$1,630.86	<b>228"</b>	\$2,554.86

### Assembled Double

First 48"	\$ 1,472.63
Each Additional Foot	\$ 200.39

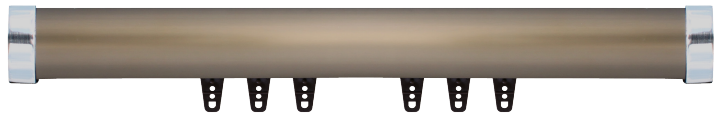
Assembled Pricing Includes: Rail cut to size, carriers, master carriers, end cap finials, double brackets, 36" fiberglass batons. Freight not included.	<b>First 48"</b>	\$1,472.63	<b>144"</b>	\$3,075.77
	<b>60"</b>	\$1,673.02	<b>156"</b>	\$3,276.16
	<b>72"</b>	\$1,873.41	<b>168"</b>	\$3,476.55
	<b>84"</b>	\$2,073.80	<b>180"</b>	\$3,676.94
	<b>96"</b>	\$2,274.20	<b>192"</b>	\$3,877.34
	<b>108"</b>	\$2,474.59	<b>204"</b>	\$4,077.73
	<b>120"</b>	\$2,674.98	<b>216"</b>	\$4,278.12
	<b>132"</b>	\$2,875.37	<b>228"</b>	\$4,478.51

## Components

BRU121	End Cap Finial	\$ 47.41	ea
BRU221	Ceiling Bracket	\$ 32.48	ea
BRU222	Single Wall Bracket	\$ 84.87	ea
BRU223	Double Wall Bracket	\$ 122.86	ea
RMAS301-WH	Ripplefold Overlap Master w/Snaps and Adaptor	\$ 8.78	ea
RMAS302-WH	Ripplefold Underlap Master w/Snaps and Adaptor	\$ 8.78	ea
PMAS101-WH	Pinch Pleat Overlap Master Multifunctional	\$ 6.94	ea
PMAS102-WH	Pinch Pleat Underlap Master Multifunctional	\$ 6.94	ea
BMAS209-WH	Butt Master Left w/3 Snaps	\$ 17.29	ea
BMAS210-WH	Butt Master Right w/3 Snaps	\$ 17.29	ea
BMAS401-WH	Wheeled Butt Master Right	\$ 26.28	ea
BMAS402-WH	Wheeled Butt Master Left	\$ 26.28	ea
RCARS60-WH	2 Piece Connected Snap 60%	\$ 1.18	ea
RCARS80-WH	2 Piece Connected Snap 80%	\$ 1.18	ea
RCARS100-WH	2 Piece Connected Snap 100%	\$ 1.18	ea
RCARS120-WH	2 Piece Connected Snap 120%	\$ 1.18	ea
BCAR02-WH	Slim Ball Bearing	\$ 0.67	ea
END306-WH	End Lock	\$ 0.89	ea

## BUDAPEST COLLECTION

page 84



BUD850	Oval Rail 16'4"	\$ 37.01	ft
--------	-----------------	----------	----

Available Finishes : BK, BZ, AL

### Assembled

First 48"	\$ 702.24
Each Additional Foot	\$ 99.91

Assembled Pricing Includes: Rail cut to size, carriers, master carriers, end cap finials, single brackets, 36" fiberglass batons. Freight not included.	<b>First 48"</b>	\$ 702.24	<b>144"</b>	\$1,501.50
	<b>60"</b>	\$ 802.15	<b>156"</b>	\$1,601.41
	<b>72"</b>	\$ 902.06	<b>168"</b>	\$1,701.32
	<b>84"</b>	\$1,001.96	<b>180"</b>	\$1,801.22
	<b>96"</b>	\$1,101.87	<b>192"</b>	\$1,901.13
	<b>108"</b>	\$1,201.78	<b>204"</b>	\$2,001.04
	<b>120"</b>	\$1,301.69	<b>216"</b>	\$2,100.95
	<b>132"</b>	\$1,401.59	<b>228"</b>	\$2,200.85

### Assembled Corded

First 48"	\$ 810.81
Each Additional Foot	\$ 114.92

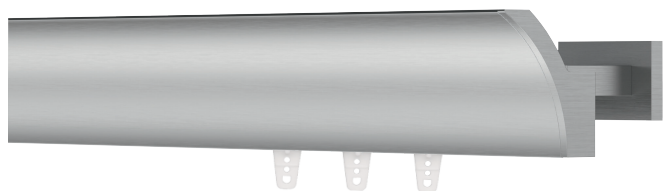
Assembled Pricing Includes: Rail cut to size, carriers, master carriers, end cap finials, single brackets, pulleys, cord and tension pulley. Freight not included.	<b>First 48"</b>	\$ 810.81	<b>144"</b>	\$1,730.19
	<b>60"</b>	\$ 925.73	<b>156"</b>	\$1,845.11
	<b>72"</b>	\$1,040.66	<b>168"</b>	\$1,960.04
	<b>84"</b>	\$1,155.58	<b>180"</b>	\$2,074.96
	<b>96"</b>	\$1,270.50	<b>192"</b>	\$2,189.88
	<b>108"</b>	\$1,385.42	<b>204"</b>	\$2,304.80
	<b>120"</b>	\$1,500.35	<b>216"</b>	\$2,419.73
	<b>132"</b>	\$1,615.27	<b>228"</b>	\$2,534.65

### Components

BUD151	End Cap Finial	\$ 49.38	ea
BUD251	Single Wall Bracket	\$ 108.97	ea
BUD250	Bracket Adaptor	\$ 33.40	ea
BUD255	Ceiling Bracket	\$ 47.93	ea
RCARS60-WH	2 Piece Connected Snap 60%	\$ 1.18	ea
RCARS80-WH	2 Piece Connected Snap 80%	\$ 1.18	ea
RCARS100-WH	2 Piece Connected Snap 100%	\$ 1.18	ea
RCARS120-WH	2 Piece Connected Snap 120%	\$ 1.18	ea
BCAR02-WH	Slim Ball Bearing	\$ 0.67	ea
RMAS301-WH	Ripplefold Overlap Master w/Snaps and Adaptor	\$ 8.78	ea
RMAS302-WH	Ripplefold Underlap Master w/Snaps and Adaptor	\$ 8.78	ea
PMAS101-WH	Pinch Pleat Overlap Master Multifunctional	\$ 6.94	ea
PMAS102-WH	Pinch Pleat Underlap Master Multifunctional	\$ 6.94	ea
BUD601	Decorative Splice	\$ 54.87	ea

## DUBLIN COLLECTION

page 86



DUB838	Rail 19'7"	\$ 76.21	ft
--------	------------	----------	----

Available Finishes : BK, PC, BN

### Assembled

First 48"	\$ 802.73
Each Additional Foot	\$ 132.25

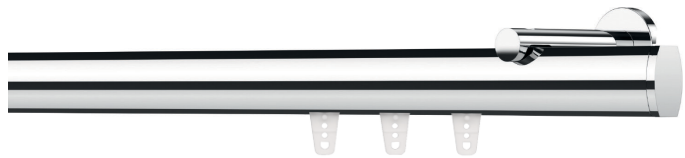
Assembled Pricing Includes: Rail cut to size, carriers, master carriers, end cap finials, single brackets, 36" fiberglass batons. Freight not included.	<b>First 48"</b>	\$ 802.73	<b>144"</b>	\$1,860.71
	<b>60"</b>	\$ 934.97	<b>156"</b>	\$1,992.95
	<b>72"</b>	\$1,067.22	<b>168"</b>	\$2,125.20
	<b>84"</b>	\$1,199.47	<b>180"</b>	\$2,257.45
	<b>96"</b>	\$1,331.72	<b>192"</b>	\$2,389.70
	<b>108"</b>	\$1,463.96	<b>204"</b>	\$2,521.94
	<b>120"</b>	\$1,596.21	<b>216"</b>	\$2,654.19
	<b>132"</b>	\$1,728.46	<b>228"</b>	\$2,786.44

## Components

DUB141	End Cap Finial	\$ 110.53	ea
DUB241	Flush Ceiling Bracket	\$ 37.02	ea
DUB242	Wall Bracket	\$ 108.26	ea
DUB243	Multi Wall Bracket	\$ 299.33	ea
DUB244	Flush Ceiling Bracket	\$ 28.84	ea
DUB251	1-1/2" Bracket Extension	\$ 44.41	ea
DUB253	3" Bracket Extension	\$ 47.47	ea
RMAS301-WH	Ripplefold Overlap Master w/Snaps and Adaptor	\$ 8.78	ea
RMAS302-WH	Ripplefold Underlap Master w/Snaps and Adaptor	\$ 8.78	ea
PMAS101-WH	Pinch Pleat Overlap Master Multifunctional	\$ 6.94	ea
PMAS102-WH	Pinch Pleat Underlap Master Multifunctional	\$ 6.94	ea
BMAS209-WH	Butt Master w/3 Snaps Left	\$ 17.29	ea
BMAS210-WH	Butt Master w/3 Snaps Right	\$ 17.29	ea
DUB601	Rail Connector	\$ 24.34	ea
BCAR02-WH	Slim Ball Bearing	\$ 0.67	ea
END306	End Stop	\$ 0.89	ea
RCARS60-WH	2 Piece Connected Snap 60%	\$ 1.18	ea
RCARS80-WH	2 Piece Connected Snap 80%	\$ 1.18	ea
RCARS100-WH	2 Piece Connected Snap 100%	\$ 1.18	ea
RCARS120-WH	2 Piece Connected Snap 120%	\$ 1.18	ea

## GALWAY COLLECTION

page 88



GAL840	Rail	\$ 48.09	ft
GAL870	2-3/4" Rail	\$ 67.22	ft

Available Finishes : BK, PC, BN

### Assembled 1-1/2" Rail

First 48"	\$ 822.94
Each Additional Foot	\$ 91.25

Assembled Pricing Includes: Rail cut to size, carriers, master carriers, end cap finials, single brackets, 36" fiberglass batons. Freight not included.	<b>First 48"</b>	\$ 822.94	<b>144"</b>	\$1,552.90
	<b>60"</b>	\$ 914.18	<b>156"</b>	\$1,644.14
	<b>72"</b>	\$1,005.43	<b>168"</b>	\$1,735.39
	<b>84"</b>	\$1,096.67	<b>180"</b>	\$1,826.63
	<b>96"</b>	\$1,187.92	<b>192"</b>	\$1,917.88
	<b>108"</b>	\$1,279.16	<b>204"</b>	\$2,009.12
	<b>120"</b>	\$1,370.41	<b>216"</b>	\$2,100.37
	<b>132"</b>	\$1,461.65	<b>228"</b>	\$2,191.61

**Assembled 1-1/2" Rail Double Set**

First 48"	\$ 1,608.34
Each Additional Foot	\$ 172.10

Assembled Pricing Includes: Rail cut to size, carriers, master carriers, end cap finials, double brackets, 36" fiberglass batons. Freight not included.	<b>First 48"</b>	\$1,608.34	<b>144"</b>	\$2,985.10
	<b>60"</b>	\$1,780.43	<b>156"</b>	\$3,157.19
	<b>72"</b>	\$1,952.53	<b>168"</b>	\$3,329.29
	<b>84"</b>	\$2,124.62	<b>180"</b>	\$3,501.38
	<b>96"</b>	\$2,296.72	<b>192"</b>	\$3,673.48
	<b>108"</b>	\$2,468.81	<b>204"</b>	\$3,845.57
	<b>120"</b>	\$2,640.91	<b>216"</b>	\$4,017.67
	<b>132"</b>	\$2,813.00	<b>228"</b>	\$4,189.76

**Assembled 2-3/4" Rail**

First 48"	\$ 919.67
Each Additional Foot	\$ 112.61

Assembled Pricing Includes: Rail cut to size, carriers, master carriers, end cap finials, single brackets, 36" fiberglass batons. Freight not included.	<b>First 48"</b>	\$ 919.67	<b>144"</b>	\$1,820.57
	<b>60"</b>	\$1,032.28	<b>156"</b>	\$1,933.18
	<b>72"</b>	\$1,144.89	<b>168"</b>	\$2,045.79
	<b>84"</b>	\$1,257.51	<b>180"</b>	\$2,158.41
	<b>96"</b>	\$1,370.12	<b>192"</b>	\$2,271.02
	<b>108"</b>	\$1,482.73	<b>204"</b>	\$2,383.63
	<b>120"</b>	\$1,595.34	<b>216"</b>	\$2,496.24
	<b>132"</b>	\$1,707.96	<b>228"</b>	\$2,608.86

**Assembled 2-3/4" Rail Double Set**

First 48"	\$ 1,825.48
Each Additional Foot	\$ 218.58

Assembled Pricing Includes: Rail cut to size, carriers, master carriers, end cap finials, double brackets, 36" fiberglass batons. Freight not included.	<b>First 48"</b>	\$1,825.48	<b>144"</b>	\$3,574.15
	<b>60"</b>	\$2,044.06	<b>156"</b>	\$3,792.73
	<b>72"</b>	\$2,262.65	<b>168"</b>	\$4,011.32
	<b>84"</b>	\$2,481.23	<b>180"</b>	\$4,229.90
	<b>96"</b>	\$2,699.81	<b>192"</b>	\$4,448.48
	<b>108"</b>	\$2,918.40	<b>204"</b>	\$4,667.07
	<b>120"</b>	\$3,136.98	<b>216"</b>	\$4,885.65
	<b>132"</b>	\$3,355.56	<b>228"</b>	\$5,104.23

**Components**

GAL141	1-1/2" Sona End Cap Finial	\$ 88.76	ea
GAL171	2-3/4" Sona End Cap	\$ 113.25	ea
GAL242	Single Wall Bracket	\$ 122.43	ea
GAL244	Flush Ceiling Bracket	\$ 28.84	ea
GAL251	1-1/2" Bracket Extension	\$ 44.41	ea
GAL253	3" Bracket Extension	\$ 47.47	ea

# VIENNA COLLECTION

page 90



VIE855	Vienna Smooth Pole Unfinished	\$ 23.68	ft
VIE855	Vienna Smooth Pole Finished	\$ 30.82	ft
VIE857	Vienna Reeded Pole Unfinished	\$ 28.32	ft
VIE857	Vienna Reeded Pole Finished	\$ 33.70	ft

Available Finishes UN, WH, BK, HZ, WL, NT

## Assembled 2"

First 48"	\$ 488.57
Each Additional Foot	\$ 46.78

Assembled Pricing Includes: Wood and track cut to size, carriers, master carriers, end cap finials, single brackets, 36" fiberglass batons. Freight not included.	<b>First 48"</b>	\$ 488.57	<b>144"</b>	\$ 862.79
	<b>60"</b>	\$ 535.34	<b>156"</b>	\$ 909.56
	<b>72"</b>	\$ 582.12	<b>168"</b>	\$ 956.34
	<b>84"</b>	\$ 628.90	<b>180"</b>	\$1,003.12
	<b>96"</b>	\$ 675.68	<b>192"</b>	\$1,049.90
	<b>108"</b>	\$ 722.45	<b>204"</b>	\$1,096.67
	<b>120"</b>	\$ 769.23	<b>216"</b>	\$1,143.45
	<b>132"</b>	\$ 816.01	<b>228"</b>	\$1,190.23

## Assembled 2" Double Set

First 48"	\$ 528.99
Each Additional Foot	\$ 60.06

Assembled Pricing Includes: Wood and track cut to size, carriers, master carriers, end cap finials, double brackets, 36" fiberglass batons. Freight not included.	<b>First 48"</b>	\$ 528.99	<b>144"</b>	\$1,009.47
	<b>60"</b>	\$ 589.05	<b>156"</b>	\$1,069.53
	<b>72"</b>	\$ 649.11	<b>168"</b>	\$1,129.59
	<b>84"</b>	\$ 709.17	<b>180"</b>	\$1,189.65
	<b>96"</b>	\$ 769.23	<b>192"</b>	\$1,249.71
	<b>108"</b>	\$ 829.29	<b>204"</b>	\$1,309.77
	<b>120"</b>	\$ 889.35	<b>216"</b>	\$1,369.83
	<b>132"</b>	\$ 949.41	<b>228"</b>	\$1,429.89

## Assembled 2-3/4"

First 48"	\$ 611.00
Each Additional Foot	\$ 58.33

Assembled Pricing Includes: Wood and track cut to size, carriers, master carriers, end cap finials, single brackets, 36" fiberglass batons. Freight not included.	<b>First 48"</b>	\$ 611.00	<b>144"</b>	\$1,091.48
	<b>60"</b>	\$ 671.06	<b>156"</b>	\$1,151.54
	<b>72"</b>	\$ 731.12	<b>168"</b>	\$1,211.60
	<b>84"</b>	\$ 791.18	<b>180"</b>	\$1,271.66
	<b>96"</b>	\$ 851.24	<b>192"</b>	\$1,331.72
	<b>108"</b>	\$ 911.30	<b>204"</b>	\$1,391.78
	<b>120"</b>	\$ 971.36	<b>216"</b>	\$1,451.84
	<b>132"</b>	\$1,031.42	<b>228"</b>	\$1,511.90

**Assembled 2-3/4" Double Set**

First 48"	\$ 660.66
Each Additional Foot	\$ 75.08

Assembled Pricing Includes: Wood and track cut to size, carriers, master carriers, end cap finials, double brackets, 36" fiberglass batons. Freight not included.	<b>First 48"</b>	\$ 660.66	<b>144"</b>	\$1,261.26
	<b>60"</b>	\$ 735.74	<b>156"</b>	\$1,336.34
	<b>72"</b>	\$ 810.81	<b>168"</b>	\$1,411.41
	<b>84"</b>	\$ 885.89	<b>180"</b>	\$1,486.49
	<b>96"</b>	\$ 960.96	<b>192"</b>	\$1,561.56
	<b>108"</b>	\$1,036.04	<b>204"</b>	\$1,636.64
	<b>120"</b>	\$1,111.11	<b>216"</b>	\$1,711.71
	<b>132"</b>	\$1,186.19	<b>228"</b>	\$1,786.79

**Components**

SMO161	Smooth Ball Finial Unfinished	\$ 35.64	ea
SMO161	Smooth Ball Finial	\$ 46.89	ea
RIN162	Ringed Ball Finial Unfinished	\$ 37.11	ea
RIN162	Ringed Ball Finial	\$ 47.18	ea
WIN163	Windsor Finial Unfinished	\$ 65.37	ea
WIN163	Windsor Finial	\$ 79.65	ea
END151	End Cap Finial Unfinished	\$ 13.98	ea
END151	End Cap Finial	\$ 17.46	ea
FLU152	Fluted Ball Unfinished	\$ 53.50	ea
FLU152	Fluted Ball	\$ 65.88	ea
ODI153	Odiseia Finial Unfinished	\$ 37.81	ea
ODI153	Odiseia Finial	\$ 56.14	ea
CAL154	Calice Finial Unfinished	\$ 39.35	ea
CAL154	Calice Finial	\$ 57.58	ea
CAM155	Campina Finial Unfinished	\$ 50.02	ea
CAM155	Campina Finial	\$ 74.39	ea
COR156	Corona Finial Unfinished	\$ 36.83	ea
COR156	Corona Finial	\$ 54.79	ea
COU157	Country Finial Unfinished	\$ 43.30	ea
COU157	Country Finial	\$ 64.78	ea
DEK158	Deka Finial Unfinished	\$ 45.55	ea
DEK158	Deka Finial	\$ 67.65	ea
BAS159	Basic Finial Unfinished	\$ 45.55	ea
BAS159	Basic Finial	\$ 67.65	ea
ZEN160	Zenith Finial Unfinished	\$ 44.47	ea
ZEN160	Zenith Finial	\$ 66.01	ea

# VENECIA COLLECTION

page 92



VEN855	Venecia Smooth Pole Unfinished	\$ 23.68	ft
VEN855	Venecia Smooth Pole Finished	\$ 30.82	ft
VEN857	Venecia Reeded Pole Unfinished	\$ 28.32	ft
VEN857	Venecia Reeded Pole Finished	\$ 33.70	ft

Available Finishes UN, WH, BK, HZ, WL, NT

## Components

M6S939-WH	Motor "S" Class with RF Built-in Receiver	\$ 1,062.91	ea
RFC06-WH	RF Multi Remote 15 ch	\$ 425.72	ea
RFW02-WH	RF Wireless Wall Switch with 2 Channels	\$ 209.54	ea

## Assembled 2" Pole with "S" Motor

First 48"	\$ 2,293.83
Each Additional Foot	\$ 83.16

Assembled Pricing Includes: Wood and track cut to size, carriers, master carriers, end cap finials, single brackets, motor "S", RF remote, and power supply. Freight not included.	<b>First 48"</b>	\$2,293.83	<b>144"</b>	\$2,959.11
	<b>60"</b>	\$2,376.99	<b>156"</b>	\$3,042.27
	<b>72"</b>	\$2,460.15	<b>168"</b>	\$3,125.43
	<b>84"</b>	\$2,543.31	<b>180"</b>	\$3,208.59
	<b>96"</b>	\$2,626.47	<b>192"</b>	\$3,291.75
	<b>108"</b>	\$2,709.63	<b>204"</b>	\$3,374.91
	<b>120"</b>	\$2,792.79	<b>216"</b>	\$3,458.07
	<b>132"</b>	\$2,875.95	<b>228"</b>	\$3,541.23

## Assembled 2-3/4" Pole with "S" Motor

First 48"	\$ 2,752.37
Each Additional Foot	\$ 100.49

Assembled Pricing Includes: Wood and track cut to size, carriers, master carriers, end cap finials, single brackets, motor "S", RF remote, and power supply. Freight not included.	<b>First 48"</b>	\$2,752.37	<b>144"</b>	\$3,556.25
	<b>60"</b>	\$2,852.85	<b>156"</b>	\$3,656.73
	<b>72"</b>	\$2,953.34	<b>168"</b>	\$3,757.22
	<b>84"</b>	\$3,053.82	<b>180"</b>	\$3,857.70
	<b>96"</b>	\$3,154.31	<b>192"</b>	\$3,958.19
	<b>108"</b>	\$3,254.79	<b>204"</b>	\$4,058.67
	<b>120"</b>	\$3,355.28	<b>216"</b>	\$4,159.16
	<b>132"</b>	\$3,455.76	<b>228"</b>	\$4,259.64



**Assembled 2" Pole with "M" Motor**

First 48"	\$2,543.31
Each Additional Foot	\$ 83.16

Assembled Pricing Includes: Wood and track cut to size, carriers, master carriers, end cap finials, single brackets, motor "M", RF remote, and power supply. Freight not included.	<b>First 48"</b>	\$2,543.31	<b>144"</b>	\$3,208.59
	<b>60"</b>	\$2,626.47	<b>156"</b>	\$3,291.75
	<b>72"</b>	\$2,709.63	<b>168"</b>	\$3,374.91
	<b>84"</b>	\$2,792.79	<b>180"</b>	\$3,458.07
	<b>96"</b>	\$2,875.95	<b>192"</b>	\$3,541.23
	<b>108"</b>	\$2,959.11	<b>204"</b>	\$3,624.39
	<b>120"</b>	\$3,042.27	<b>216"</b>	\$3,707.55
	<b>132"</b>	\$3,125.43	<b>228"</b>	\$3,790.71

**Assembled 2-3/4" Pole with "M" Motor**

First 48"	\$3,000.69
Each Additional Foot	\$ 100.49

Assembled Pricing Includes: Wood and track cut to size, carriers, master carriers, end cap finials, single brackets, motor "M", RF remote, and power supply. Freight not included.	<b>First 48"</b>	\$3,000.69	<b>144"</b>	\$3,804.57
	<b>60"</b>	\$3,101.18	<b>156"</b>	\$3,905.06
	<b>72"</b>	\$3,201.66	<b>168"</b>	\$4,005.54
	<b>84"</b>	\$3,302.15	<b>180"</b>	\$4,106.03
	<b>96"</b>	\$3,402.63	<b>192"</b>	\$4,206.51
	<b>108"</b>	\$3,503.12	<b>204"</b>	\$4,307.00
	<b>120"</b>	\$3,603.60	<b>216"</b>	\$4,407.48
	<b>132"</b>	\$3,704.09	<b>228"</b>	\$4,507.97

**DECORATIVE POLE SETS**

**MARSEILLE COLLECTION**



page 96

MAR812	Marseille Smooth 1/2" Pole	\$ 25.21	ft
--------	----------------------------	----------	----

Available Finishes PC, PB, BZ, GT, PW, SS

**Components**

MAR111	End Cap Finial	\$ 13.76	ea
MAR112	Pop Finial	\$ 20.03	ea
MAR113	Leo Finial	\$ 21.76	ea
MAR114	Bala Finial	\$ 22.48	ea
MAR115	Domo Finial	\$ 21.97	ea
MAR116	Velate Finial	\$ 21.03	ea
MAR211	Short Closed Bracket	\$ 20.46	ea
MAR212	Long Closed Bracket	\$ 39.19	ea
MAR213	Modern Open Bracket	\$ 37.43	ea
MAR216	Inside Mount Bracket	\$ 19.67	ea
MAR312	Ring w/Eyelet	\$ 7.50	ea

## PARIS COLLECTION

page 98



PAR820	Paris Smooth 3/4" Pole	\$ 29.59	ft
--------	------------------------	----------	----

*Available Finishes PC, SN, SB, BM*

### Components

PAR124	Alassio Finial	\$ 195.00	ea
PAR127	Alea Finial	\$ 29.22	ea
PAR121	End Cap Finial	\$ 48.50	ea
PAR122	Riva Finial	\$ 157.67	ea
PAR126	Selva Finial	\$ 146.04	ea
PAR127	Gota Finial	\$ 178.90	ea
PAR226	Inside Mount Bracket	\$ 88.94	ea
PAR221	Single Wall Bracket	\$ 165.75	ea
PAR223	Double Wall Bracket	\$ 250.64	ea
PAR320	Ring w/Eyelet	\$ 10.19	ea
PAR410	Swivel Elbow	\$ 198.07	ea
PAR601	Splice	\$ 17.07	ea

## WESTPORT COLLECTION

page 100



WES828	Westport Smooth 1-1/8" Pole	\$ 25.53	ft
--------	-----------------------------	----------	----

*Available Finishes WH, CH, BK, SS, SN, SG, BZ, WL, OA*

### Components

WES121	End Cap Finial	\$ 19.95	ea
WES122	Lazio Finial	\$ 49.38	ea
WES123	Westin Finial	\$ 49.38	ea
WES124	Zeus Finial	\$ 54.33	ea
WES125	Aspen Finial	\$ 54.33	ea
WES126	Naxos Finial	\$ 56.98	ea
WES128	Dixon Finial	\$ 63.70	ea
WES129	Moxy Finial	\$ 69.10	ea
WES130	Huff Finial	\$ 59.90	ea
WES131	Cielo Finial	\$ 63.40	ea
WES132	Hera Finial	\$ 63.40	ea
WES221	Closed Ceiling Bracket	\$ 41.65	ea
WES222	Closed Wall Bracket	\$ 48.98	ea
WES240	Return Bracket	\$ 60.40	ea
WES223	Open Double Wall Bracket	\$ 69.70	ea
WES328	Ring w/Eyelet	\$ 6.03	ea
WES335	Flat Ring	\$ 12.59	ea
WES330	Flat Ring 30mm	\$ 8.45	ea
WES601	Splice	\$ 17.07	ea

## LONDON COLLECTION

page 102



LON828	London Smooth 1-1/8" Pole	\$ 33.63	ft
--------	---------------------------	----------	----

*Available Finishes PC, SN, SB, BM*

### Components

LON125	Alea Finial	\$ 80.32	ea
LON121	End Cap Finial	\$ 56.60	ea
LON122	Riva Finial	\$ 266.78	ea
LON133	Terra Finial	\$ 130.32	ea
LON134	Tahoe Finial	\$ 166.47	ea
LON135	Zena Finial	\$ 162.28	ea
LON136	Edil Finial	\$ 169.95	ea
LON131	Ardea Finial	\$ 540.19	ea
LON132	Socket for Ardea Finial	\$ 108.62	ea
LON124	Alassio Finial	\$ 323.37	ea
LON127	Napoli Finial	\$ 401.63	ea
LON126	Verona Finial	\$ 438.11	ea
LON123	Pescara Finial	\$ 319.36	ea
LON226	Inside Mount Bracket	\$ 113.18	ea
LON240	French Return Bracket	\$ 206.20	ea
LON229	Support Bracket for French Return	\$ 202.01	ea
LON221	Single Wall Bracket	\$ 262.75	ea
LON223	Double Wall Bracket	\$ 363.80	ea
LON330	Ring w/Eyelet	\$ 14.21	ea
LON340	Modern Ring w/Eyelet	\$ 9.83	ea
LON410	Swivel Elbow	\$ 215.16	ea
LON601	Splice	\$ 17.07	ea

## MILAN COLLECTION

page 104



MIL830	Milan Metal 1-3/16" Pole	\$ 46.23	ft
ACR830	Smooth Clear Acrylic 1-3/16" Pole	\$ 36.27	ft

*Available Finishes PC, PB, SB, SW, SN, AB, OR, BB, BS, GT, FB, RG, PN*

### Components

MIL131	End Cap Finial	\$ 27.73	ea
MIL133	Cilindro Finial	\$ 77.49	ea
MIL134	Inca Finial	\$ 77.84	ea
MIL152	Acrylic Ball Finial*	\$ 82.67	ea
MIL136	Velate Finial	\$ 81.83	ea
MIL135	Slant Finial	\$ 56.26	ea
MIL150	Block Finial	\$ 69.52	ea
MIL151	Tier Finial	\$ 73.47	ea
MIL132	Toscana Finial	\$ 58.03	ea

MIL231	Closed Ceiling Bracket	\$ 72.53	ea
MIL232	Closed Wall Bracket	\$ 83.11	ea
MIL235	Double Closed Wall Bracket	\$ 90.67	ea
MIL234	Closed Extended Bracket	\$ 76.50	ea
MIL233	Open Wall Bracket	\$ 69.96	ea
MIL236	Open Inside Mount Bracket	\$ 39.65	ea
MIL240	French Return Bracket	\$ 85.35	ea
MIL410	Swivel Corner Connector	\$ 92.39	ea
MIL300	Plastic Lined Hollow Ring	\$ 6.86	ea
MIL350	Flat Ring	\$ 12.96	ea
MIL601	Splice	\$ 17.07	ea

## PRAHA COLLECTION

page 106



PRA830	Praha Stainless Steel 1-3/16" Pole	\$ 46.23	ft
ACR830	Smooth Clear Acrylic 1-3/16" Pole	\$ 36.27	ft

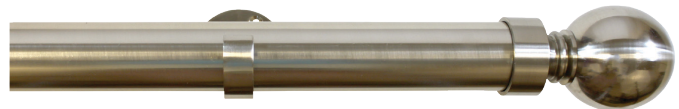
### Components

PRA131	End Cap Finial	\$ 27.73	ea
PRA132	Round Finial (BR)/(BK)	\$ 119.40	ea
PRA133	Square Finial (BR)/(BK)	\$ 119.03	ea
PRA134	Delta Finial	\$ 90.23	ea
PRA135	Sydney Finial	\$ 104.80	ea
PRA136	Pop Finial	\$ 67.14	ea
PRA137	Inca Finial	\$ 77.84	ea
PRA138	Velate Finial	\$ 81.88	ea
PRA139	Nova Finial	\$ 77.14	ea
PRA150	Acrylic Ball Finial	\$ 87.62	ea
PRA140	Yale Finial	\$ 18.90	ea
PRA141	Lazio Finial	\$ 59.69	ea
PRA142	Maya Finial	\$ 109.32	ea
PRA143	Niza Finial	\$ 109.32	ea
PRA144	Mila Finial	\$ 115.17	ea
PRA145	Elsa Finial	\$ 102.11	ea
PRA146	Hex Finial	\$ 105.62	ea
PRA147	Edin Finial	\$ 90.34	ea
PRA231	Closed Ceiling Bracket	\$ 72.53	ea
PRA232	Closed Wall Bracket	\$ 83.11	ea
PRA233	Open Wall Bracket	\$ 71.67	ea
PRA237	Cylinder Wall Bracket	\$ 113.64	ea
PRA238	Double Cylinder Wall Bracket	\$ 185.79	ea
PRA236	Open Inside Mount Bracket	\$ 39.65	ea
PRA234	Extended Closed Wall Bracket	\$ 76.50	ea
PRA235	Double Closed Wall Bracket	\$ 90.67	ea
PRA239	Cylinder Ceiling Bracket	\$ 126.06	ea
PRA410	Swivel Corner Connector	\$ 92.39	ea
PRA240	Juve Single Wall Bracket Adjustable to 5-1/2"	\$ 52.13	ea

PRA241	Juve Double Wall Bracket Adjustable to 5-1/4"	\$ 71.18	ea
PRA242	Juve Ceiling Bracket	\$ 50.31	ea
PRA243	Juve Double Ceiling Bracket	\$ 68.58	ea
PRA244	Closed Recess Bracket	\$ 34.51	ea
PRA245	Nox Short Single Wall Bracket	\$ 92.34	ea
PRA246	Nox Long Single Wall Bracket	\$ 104.98	ea
PRA247	Nox Double Wall Bracket	\$ 127.27	ea
PRA248	Nox Single Ceiling Bracket	\$ 101.44	ea
PRA249	Nox Double Ceiling Bracket	\$ 132.99	ea
PRA250	French Return Bracket	\$ 85.35	ea
PRA300	Plastic Lined Hollow Ring	\$ 7.03	ea
PRA350	Flat Ring	\$ 12.96	ea
PRA601	Pole Splice	\$ 17.07	ea
MBA240	Round Baton 40"	\$ 106.56	ea
MBA340	Square Baton 40"	\$ 112.20	ea

## FRANKFURT COLLECTION

page 109



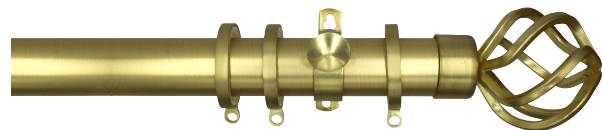
FRA850	Frankfurt 2" Metal Pole SS	\$ 40.60	ft
--------	----------------------------	----------	----

### Components

FRA151	End Cap Finial	\$ 54.86	ea
FRA152	Ball Finial	\$ 84.85	ea
FRA253	Single Wall Bracket	\$ 88.84	ea
FRA255	Ceiling Bracket	\$ 94.89	ea
FRA259	Recess Bracket	\$ 66.42	ea
FRA350	Plastic Lined Ring	\$ 21.34	ea
FRA601	Pole Splice	\$ 29.29	ea

## RIO COLLECTION

page 110



RIO835	Rio 1-3/8" Pole	\$ 33.38	ft
ACR835	Smooth Clear Acrylic 1-3/8" Pole	\$ 42.62	ft

Available Finishes PC, BK, BZ, SB, SN, BN, WH

### Components

RIO131	End Cap Finial	\$ 32.92	ea
RIO132	Lazio Ball Finial	\$ 65.66	ea
RIO133	Rey Finial	\$ 68.38	ea
RIO134	Cela Finial	\$ 61.33	ea
RIO135	Sphere Finial	\$ 95.29	ea
RIO232	Open Wall Bracket	\$ 38.92	ea

RIO233	Closed Wall Bracket	\$ 67.91	ea
RIO410	Swivel Coner Connector	\$ 92.39	ea
RIO335	Flat Ring	\$ 12.59	ea
RIO336	Slim Round Ring	\$ 9.40	ea
RIO601	Pole Splice	\$ 17.07	ea

## OSLO COLLECTION

page 112



OSL835	Oslo Acrylic 1-3/8" Pole	\$ 44.24	ft
--------	--------------------------	----------	----

Available Finishes PC, PB, GT

### Components

OSL131	Pilbox Finial	\$ 133.34	ea
OSL132	Sphere Finial	\$ 170.13	ea
OSL133	Cylindar Finial	\$ 156.34	ea
OSL233	Closed Wall Bracket	\$ 121.40	ea
OSL234	Extended Closed Wall Bracket	\$ 132.42	ea
OSL236	Recess Wall Bracket	\$ 80.72	ea
OSL231	Cylinder Wall Bracket	\$ 82.27	ea
OSL232	Extended Cylinder Wall Bracket	\$ 121.40	ea
OSL335	Metal Ring w/Eyelet	\$ 12.69	ea
OSL635	Decorative Splice	\$ 67.98	ea

## ESSEN COLLECTION

page 114



ESS820	Essen Wrought Iron 3/4" Pole	\$ 9.49	ft
--------	------------------------------	---------	----

Available Finishes BS, GC, SG, RS, GR, BK, BR

### Components

ESS121	End Cap Finial	\$ 14.30	ea
ESS124	Berry Finial	\$ 25.94	ea
ESS125	Caracola Finial	\$ 41.06	ea
ESS126	Troia Finial	\$ 28.70	ea
ESS127	Marte Finial	\$ 25.94	ea
ESS122	Bola Finial	\$ 41.08	ea
ESS123	Everest Finial	\$ 38.60	ea
ESS221	Lateral Bracket	\$ 20.14	ea
ESS222	Ceiling Bracket	\$ 33.17	ea
ESS223	York Single Open Wall Bracket	\$ 34.88	ea
ESS224	York Double Open Wall Bracket	\$ 46.33	ea
ESS225	York Single Closed Wall Bracket	\$ 38.36	ea
ESS226	York Double Closed Wall Bracket	\$ 51.12	ea
ESS410	Swivel Corner Connector	\$ 71.64	ea
ESS320	Smooth Ring	\$ 5.45	ea
ESS601	Pole Splice	\$ 17.07	ea

## TORINO COLLECTION

page 116



TOR830	Torino Wrought Iron 1-3/16" Pole	\$	12.87	ft
--------	----------------------------------	----	-------	----

*Available Finishes BS, GC, SG, RS, GR, BK, BR*

### Components

TOR131	End Cap Finial	\$	16.26	ea
TOR134	Berry Finial	\$	28.83	ea
TOR135	Caracola Finial	\$	74.25	ea
TOR136	Troia Finial	\$	31.88	ea
TOR137	Marte Finial	\$	28.83	ea
TOR132	Bola Finial	\$	71.10	ea
TOR138	Smooth Ball Finial	\$	71.10	ea
TOR133	Everest Finial	\$	42.90	ea
TOR231	Lateral Bracket	\$	21.44	ea
TOR232	Ceiling Bracket	\$	33.78	ea
TOR233	York Single Open Wall Bracket	\$	34.88	ea
TOR234	York Double Open Wall Bracket	\$	46.49	ea
TOR240	French Return Bracket	\$	43.07	ea
TOR235	York Single Closed Wall Bracket	\$	38.36	ea
TOR236	York Double Closed Wall Bracket	\$	51.12	ea
TOR410	Swivel Corner Connector	\$	113.42	ea
TOR330	Smooth Ring	\$	10.81	ea
TOR601	Pole Splice	\$	17.07	ea

## BEACHFRONT COLLECTION

page 118



BEA828	Beachfront Pole 20'	\$	35.76	ft
--------	---------------------	----	-------	----

*Available Finishes BK, BZ, WH, SS*

### Components

BEA121	End Cap Finial	\$	28.94	ea
BEA122	Lazio Finial	\$	77.02	ea
BEA221	Closed Ceiling Bracket	\$	97.57	ea
BEA222	Closed Wall Bracket	\$	106.87	ea
BEA328	Ring w/Eyelet	\$	12.19	ea
BEA330	#12 Grommet	\$	12.58	ea
BEA601	Splice	\$	17.07	ea

## ROMA COLLECTION

page 120



ROM835	Roma Smooth Wood Pole	\$	11.15	ft
--------	-----------------------	----	-------	----

*Available Finishes UN, WH, ST, BK, HZ, HN, WL, NT*

### Components

ROM141	Redondo Finial	\$	76.26	ea
ROM142	Mossa Finial	\$	79.45	ea
ROM131	End Cap Finial	\$	10.24	ea
ROM132	Bola Finial	\$	14.45	ea
ROM133	Odiseia Finial	\$	35.60	ea
ROM134	Calice Finial	\$	38.60	ea
ROM135	Campina Finial	\$	33.41	ea
ROM136	Corona Finial	\$	18.12	ea
ROM137	Country Finial	\$	38.15	ea
ROM138	Deka Finial	\$	30.41	ea
ROM139	Basic Finial	\$	30.41	ea
ROM140	Zenith Finial	\$	35.25	ea
ROM234	Inside Mount Bracket	\$	16.20	ea
ROM233	Ceiling Bracket	\$	21.51	ea
ROM232	Classic Open Bracket	\$	25.48	ea
ROM231	Cylinder Bracket	\$	21.40	ea
WHB507	Wood Holdback	\$	28.05	ea
ROM330	Wood Ring w/Eyelet	\$	3.52	ea

## TOULOUSE COLLECTION

page 122



TOU835	Smooth Wood Pole	\$	45.54	ft
--------	------------------	----	-------	----

*Available Finishes DR, WO, RE, TO, ES*

### Components

TOU131	End Cap Finial	\$	13.58	ea
TOU132	Smooth Ball Finial	\$	29.53	ea
TOU133	Ringed Ball Finial	\$	29.53	ea
TOU134	Granada Finial	\$	23.26	ea
TOU135	Castell Finial	\$	24.47	ea
TOU234	Wood Wall Bracket	\$	48.54	ea
TOU333	Wood Ring	\$	3.40	ea



# MADRID COLLECTION

page 124



MAD850	Madrid Smooth Pole Unfinished	\$ 21.33	ft
MAD850	Madrid Smooth Pole Finished	\$ 24.19	ft
MAD850	Madrid Smooth Pole Antiqued	\$ 36.23	ft
MAD850	Madrid Reeded Pole Unfinished	\$ 23.68	ft
MAD850	Madrid Reeded Pole Finished	\$ 30.82	ft

Available Finishes UN, WH, SA, LA, ST, BK, HZ, HN, WL, NT

## Components

END151	End Cap Finial Unfinished	\$ 13.98	ea
END151	End Cap Finial Finished	\$ 17.46	ea
END151	End Cap Finial Antiqued	\$ 23.05	ea
RIN162	Ringed Ball Finial Unfinished	\$ 37.11	ea
RIN162	Ringed Ball Finial Finished	\$ 47.18	ea
RIN162	Ringed Ball Finial Antiqued	\$ 67.29	ea
WIN163	Windsor Finial Unfinished	\$ 65.37	ea
WIN163	Windsor Finial Finished	\$ 79.65	ea
WIN163	Windsor Finial Antiqued	\$ 85.91	ea
SMO161	Smooth Ball Finial Unfinished	\$ 35.64	ea
SMO161	Smooth Ball Finial Finished	\$ 46.89	ea
FLU152	Fluted Ball Finial Unfinished	\$ 53.50	ea
FLU152	Fluted Ball Finial Finished	\$ 65.88	ea
ODI153	Odiseia Finial Unfinished	\$ 37.81	ea
ODI153	Odiseia Finial Finished	\$ 56.14	ea
CAL154	Calice Finial Unfinished	\$ 39.35	ea
CAL154	Calice Finial Finished	\$ 57.58	ea
CAM155	Campina Finial Unfinished	\$ 50.02	ea
CAM155	Campina Finial Finished	\$ 74.39	ea
COR156	Corona Finial Unfinished	\$ 36.83	ea
COR156	Corona Finial Finished	\$ 54.79	ea
TUD165	Tudor Finial Unfinished	\$ 61.20	ea
TUD165	Tudor Finial Finished	\$ 67.71	ea
DEK158	Deka Finial Unfinished	\$ 45.55	ea
DEK158	Deka Finial Finished	\$ 67.65	ea
BAS159	Basic Finial Unfinished	\$ 45.55	ea
BAS159	Basic Finial Finished	\$ 67.65	ea
TRA164	Traditional Finial Unfinished	\$ 32.77	ea
TRA164	Traditional Finial Finished	\$ 39.87	ea
TRA164	Traditional Finial Antiqued	\$ 45.54	ea
MAD254	Inside Mount Bracket Unfinished	\$ 30.08	ea
MAD254	Inside Mount Bracket Finished	\$ 37.09	ea
MAD254	Inside Mount Bracket Antiqued	\$ 53.63	ea
MAD253	Euro Wood Bracket Unfinished	\$ 25.94	ea
MAD253	Euro Wood Bracket Finished	\$ 32.78	ea
MAD253	Euro Wood Bracket Antiqued	\$ 50.42	ea

MAD251	Wall Wood Bracket Unfinished	\$ 39.30	ea
MAD251	Wall Wood Bracket Finished	\$ 48.54	ea
MAD251	Wall Wood Bracket Antiqued	\$ 71.06	ea
MAD252	Extended Wood Bracket Unfinished	\$ 71.26	ea
MAD252	Extended Wood Bracket Finished	\$ 88.00	ea
MAD350	Wood Ring w/Eyelet Unfinished	\$ 5.08	ea
MAD350	Wood Ring w/Eyelet Finished	\$ 6.85	ea
MAD350	Wood Ring w/Eyelet Antiqued	\$ 11.24	ea
WHB504	Rosette Shield Unfinished	\$ 29.79	ea

## VALENCIA COLLECTION

page 126



VAL870	Valencia Smooth Pole	\$ 37.16	ft
VAL871	Valencia Reeded Pole	\$ 39.11	ft

*Available Finishes UN, WH, BK, HZ, HN, WL, NT*

### Components

END171	End Cap Finial	\$ 17.14	ea
FLU172	Fluted Ball Finial	\$ 76.75	ea
ODI173	Odiseia Finial	\$ 56.33	ea
CAL174	Calice Finial	\$ 57.85	ea
CAM175	Campina Finial	\$ 73.33	ea
COR176	Corona Finial	\$ 54.97	ea
COU177	Country Finial	\$ 64.68	ea
DEK178	Deka Finial	\$ 68.01	ea
BAS179	Basic Finial	\$ 68.01	ea
ZEN180	Zenith Finial	\$ 66.48	ea
SMO181	Smooth Ball Finial	\$ 56.60	ea
RIN182	Ringed Ball Finial	\$ 58.93	ea
WIN183	Windsor Finial	\$ 104.85	ea
TRA184	Traditional Finial	\$ 78.69	ea
TUD185	Tudor Finial	\$ 72.63	ea
VAL271	Wood Wall Bracket	\$ 42.58	ea
VAL274	Mount Bracket	\$ 47.93	ea
VAL370	Wood Ring w/Eyelet	\$ 20.02	ea

## OTHER PRODUCTS & SERVICES

### BATONS

page 130



#### 1/2" Acrylic Batons w/Snap

ABA36S-CL	36"	\$ 11.01	ea
ABA48S-CL	48"	\$ 17.81	ea
ABA60S-CL	60"	\$ 23.84	ea
ABA72S-CL	72"	\$ 32.09	ea

#### 1/2" Acrylic Batons w/Adaptor

ABA36A-CL	36"	\$ 11.01	ea
ABA48A-CL	48"	\$ 17.81	ea
ABA60A-CL	60"	\$ 23.84	ea
ABA72A-CL	72"	\$ 32.09	ea

#### 1/2" Acrylic Fluted Batons w/Snap

FABA36S-CL	36"	\$ 11.01	ea
FABA48S-CL	48"	\$ 17.81	ea
FABA60S-CL	60"	\$ 23.84	ea
FABA72S-CL	72"	\$ 32.09	ea

#### 1/2" Acrylic Fluted Batons w/Adaptor

FABA36A-CL	36"	\$ 11.01	ea
FABA48A-CL	48"	\$ 17.81	ea
FABA60A-CL	60"	\$ 23.84	ea
FABA72A-CL	72"	\$ 32.09	ea

#### ADA Acrylic Batons w/Adaptor

ADA48A-CL	48"	\$ 57.37	ea
ADA60A-CL	60"	\$ 66.40	ea
ADA72A-CL	72"	\$ 83.69	ea

#### ADA Fiberglass Batons w/Adaptor

FADA48A-WH	48"	\$ 61.88	ea
FADA60A-WH	60"	\$ 71.52	ea
FADA72A-WH	72"	\$ 86.38	ea
FADA84A-WH	84"	\$ 94.17	ea

#### 1/2" Aluminum Heavy Duty Baton

Available Finishes: WH, SL, BZ, BK

MBA36S	36"	\$ 74.96	ea
MBA48S	48"	\$ 90.44	ea
MBA60S	60"	\$ 109.61	ea
MBA72S	72"	\$ 131.03	ea

MBA84S	84"	\$ 147.38	ea
MBA96S	96"	\$ 164.65	ea

### 3/8" Fiberglass Batons w/Snap

FBA30S-WH	30"	\$ 7.07	ea
FBA36S-WH	36"	\$ 7.60	ea
FBA48S-WH	48"	\$ 9.83	ea
FBA60S-WH	60"	\$ 13.76	ea
FBA72S-WH	72"	\$ 18.34	ea
FBA84S-WH	84"	\$ 24.23	ea
FBA96S-WH	96"	\$ 30.26	ea

### 3/8" Fiberglass Batons w/Adaptor

FBA30A-WH	30"	\$ 7.07	ea
FBA36A-WH	36"	\$ 7.60	ea
FBA48A-WH	48"	\$ 9.83	ea
FBA60A-WH	60"	\$ 13.76	ea
FBA72A-WH	72"	\$ 18.34	ea
FBA84A-WH	84"	\$ 24.23	ea
FBA96A-WH	96"	\$ 30.26	ea

### Metal Baton 40"

MBA140	40"	\$ 101.33	ea
--------	-----	-----------	----

*Available Finishes: PC, PB, SB, SW, SN, AB, BB, BS, GT*

### Round Metal Baton Stainless Steel 40"

MBA240	40"	\$ 106.56	ea
--------	-----	-----------	----

### Square Metal Baton Stainless Steel 40"

MBA340	40"	\$ 112.20	ea
--------	-----	-----------	----

### Wrought Iron Baton 40"

IBA440	40"	\$ 90.10	ea
--------	-----	----------	----

*Available Finishes: BS, CG, SG, RS, GR, BK*

### Slim Metal Baton

MBA736	36"	\$ 73.48	ea
MBA748	48"	\$ 88.74	ea
MBA760	60"	\$ 98.11	ea
MBA772	72"	\$ 122.64	ea

*Available Finishes: BK, SB, AB, SS, SN, GT*

### Aluminum Baton with Snap or Adaptor

ALB36S	36"	\$ 19.52	ea
ALB36A	36"	\$ 19.52	ea
ALB48S	48"	\$ 21.81	ea
ALB48A	48"	\$ 21.81	ea

*Available Finishes: WH, SL, GT, BK*

## Round Wood Baton 40"

WBA540	Unfinished	\$ 23.85	ea
WBA540	Finished	\$ 29.36	ea
WBA540	Antique	\$ 54.67	ea

Available Finishes: UN, WH, ST, BK, HZ, HN, WL, NT

## Cylinder Wood Baton 40"

WBA640	Unfinished	\$ 23.85	ea
WBA640	Finished	\$ 29.36	ea
WBA640	Antique	\$ 54.67	ea

Available Finishes: UN, WH, ST, BK, HZ, HN, WL, NT

## Decorative Acrylic Baton

DAB36S	36"	\$ 50.30	ea
DAB36A	36"	\$ 50.30	ea
DAB48S	48"	\$ 57.10	ea
DAB48A	48"	\$ 57.10	ea
DAB60S	60"	\$ 63.13	ea
DAB60A	60"	\$ 63.13	ea
DAB72S	72"	\$ 71.38	ea
DAB72A	72"	\$ 71.38	ea

Available Finishes: BK, SB, BZ, PC, SN, WH, BN

## Holdbacks and Tiebacks

page 132



### Wood Holdbacks

WHB507	Wood Holdback	\$ 28.05	ea
WHB504-UN	Rosetta Shield	\$ 29.79	ea
WHB505	Round Wood Holdback	\$ 57.50	ea
WHB506	Square Wood Holdback	\$ 57.50	ea

Available Finishes: UN, WH, BK, HZ, HN, WL, NT

### Metal Holdbacks

MHB512	Swing Holdback	\$ 97.53	ea
MHB511	Cylinder Holdback	\$ 60.58	ea
MHB510	Ball Holdback	\$ 60.58	ea
MHB513	Flat Holdback	\$ 377.50	ea

Available Finishes: SN, SS, PC, GT, BK, BZ. Flat Holdback not available in GT finish.

### Tiebacks

TIE520	Donato Tieback	\$ 41.78	ea
TIE521	Lia Tieback	\$ 41.78	ea

Available Finishes: OW, SL, WL

TIE522	Dante Tieback	\$ 43.88	ea
TIE523	Ofir Tieback	\$ 55.14	ea

Available Finishes: OWG, BKS, WLG

TIE524	Elia Tieback	\$	45.71	ea
--------	--------------	----	-------	----

Available Finishes: WH, SL, BR, BK

TIE525	Ava Tieback	\$	52.13	ea
--------	-------------	----	-------	----

Available Finishes: BKS, BRG

## Snap Tape & Grommets

page 134



### Snap Tape

RSTP03-WH	1" Ripplefold Snap Tape	\$	5.22	yd
RSTP01-BK	1" Ripplefold Snap Tape - Black	\$	5.69	yd
RSTP01-CL	1" Ripplefold Snap Tape - Clear	\$	5.69	yd
RSTP07-WH	Accordiafold Snap Tape 7-1/2" OC	\$	6.81	yd
RSTP08-WH	Accordiafold Snap Tape 8-1/2" OC	\$	6.81	yd
RSTP10-WH	Accordiafold Snap Tape 10" OC	\$	6.81	yd
STI09-WH	Stiffener LG	\$	1.17	ea
STI01-WH	Small Stiffener for Sheers	\$	0.98	ea
FWT36-CL	FlexWave Tape	\$	4.34	yd
FWP37-WH	FlexWave Pendant for Ripplefold Carriers	\$	0.55	ea
FWH38-WH	FlexWave Hook	\$	0.29	ea
RSTP04-CL	4" Translucent Ripplefold Snap Tape	\$	7.53	yd
RSTP02-CL	2" Translucent Ripplefold Snap Tape	\$	6.68	yd
BWE05-WH	Braided Lead Weight Roll 5/32"	\$	421.81	Roll

### Grommets

GROM12	Grommet #12	\$	5.66	ea
GROM15	Grommet #15	\$	8.95	ea

Available Finishes: SB, AB, BZ, BK, GT, SN, CR, SS

## Curves and Bends

page 136

### Track Systems

B3, D3, B9, C6, M6	\$	75.00	Starting
--------------------	----	-------	----------

### Decorative Rails

Urban	\$	125.00	Starting
Amsterdam	\$	125.00	Starting
Barcelona	\$	125.00	Starting
Munich	\$	125.00	Starting
Lyon	\$	125.00	Starting
Berlin	\$	125.00	Starting
Seine	\$	125.00	Starting

\*Polished Chrome Finish Excluded